

ALL SEASONS  
**CATALOGUE**

2023



Spring | Summer | Autumn | Winter

## DEAR FRIENDS

First, I would like to thank you for your preference for TH Clothes Family. It is with great satisfaction that I observe the continuous brand growth over the years. The constancy of the values that have guided us, our commitment to the elegance, to the details, and the certified quality, has proved to be a winning strategy that we are very proud of. TH Clothes has been building a path full of successes and its recognition in European markets is already a reality, to such an extent, that we are currently an unavoidable player in the sector.

Like our ancestors, we are committed to conquering the world, leveraged by our perseverance, resilience and conviction that what we are building is something that fully reflects the Portuguese DNA.

For 2023, the brand's strategy is to assume a more premium positioning and a clear commitment to new communication channels, namely through the upgrade of the website and the creation of a mobile application, which will bring us even closer to our customers.

This year we also want to reinforce our commitment to reducing the use of plastic, so we decided to create an internal project for the reuse/reconversion of all shipping material, which we called ReBox. We believe that this responsible investment in biodegradable materials such as cardboard makes more and more sense and will certainly contribute to a surely more sustainable future.

I say goodbye, thanking you again for your preference for TH Clothes family and I wish you a year full of health and success.



Mauro Silva  
CEO









An aerial photograph of a vast, turquoise sea under a bright blue sky with scattered white clouds. The water transitions from a shallow, light turquoise near the coast to a deeper, darker blue further out. A small, rocky island is visible in the lower-left quadrant, and a white wake from a boat stretches across the water. The coastline is visible on the left, with green vegetation and some buildings. The overall scene is serene and scenic.

TH CLOTHES  
— 2023 —

# THIS IS OUR WORLD

TH Clothes is a brand owned by Organizações Biscana, whose headquarters are in the central region of Portugal, more specifically in Batalha. Having started its journey in 2006, the brand appears on the market with the aim of filling the need to supply certified quality products at a fair price. The years that followed, namely between 2010 and 2015, translated into an exponential growth of the brand in the Portuguese market, as a result of the clear commitment to the development of new products with added value for its customers, and consequently, the internationalization of the brand, which became represented in 12 European countries.

2016 was a year of great importance in terms of innovation and new products development. It was in this period that the brand reinforced its *avant-garde* positioning, with the presentation of 37 new items on the market.

In 2017, with the aim of consolidating its position in the market, TH Clothes' strategy was mainly based on three important pillars: the constant focus on innovation in terms of the development of new products, the doubling of stock, with the brand now having around 6 million items, and finally, we highlight the remarkable work of selecting potential markets and the respective expansion of its distribution, which currently represents sales to 27 countries.

In 2018, the brand once again reinforces its permanent stock, and expands its range of colors, introducing five new items considered essential in the promotional market. That same year, it became a member of Fair Wear Foundation, an international entity that certifies and attests to the brand's collaboration in the constant improvement of working conditions in the factories where its products are produced.

2019 brought a revolution in terms of its color palette, with the brand introducing ten options in the main items of its most important ranges. In the same year, due to market demands, some premium items were also presented, thus reinforcing the archetype of quality and modernism characteristic of the brand.

In 2020, TH Clothes further expanded its range of products, presenting to the market a line of workwear, which reflected the perfect alliance between the quality and durability of materials, with a touch of unique design characteristic of the brand. In the same year, the global pandemic of COVID-19 dictated a new reality and created new needs, and the brand responded with the creation of THC Atlântida and THC Atlântida Kids, a customizable mask with the CITEVE level III seal of approval for protection society against COVID-19.

In 2021, the brand once again continues its innovative tradition and launches the first sneaker on the market with a removable and customizable patch. It was also the first year of the Less Plastic Initiative, an action that aims to demonstrate the brand's commitment to significantly reducing plastic consumption.

2022 brings with it continuity, both in terms of investing in new products and the introduction of new colors, however, what stands out most this year was the effort to develop substantially more efficient logistics, with the modernization of the layout of the main warehouse in Portugal and consequently with the introduction of a new intelligent software, which made possible a faster and more assertive dispatch of all its products. In yet another field, and in order to complement the brand's approach to customers, a new website was presented, with a more modern and intuitive design.





# THIS IS OUR CULTURE



In order to ensure working conditions for people in the ready-made garments industry and to avoid incidents in the countries where we purchase our products, TH Clothes considered essential to become a member of the International Health and Safety Agreement in Textile and Clothing Industry (International Agreement).

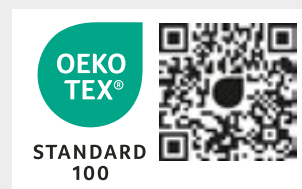
This agreement is legally binding between clothing brands and unions, with the aim of making textile factories safer. TH Clothes thus takes extreme care with the working conditions of all those who contribute to the production of its products, so it provides all the guidelines so that they are safe throughout the production process. In this way, TH Clothes, in partnership with Bangladesh suppliers, ensures that all measures are being taken to build a better future for the clothing business.



TH Clothes becomes a member of the Fair Wear Foundation. This commitment reflects the brand's willingness to respect the code of labor practices based on internationally recognized standards, namely with regard to the following pillars: free choice of work, non-discrimination in employment, non-existence of child labor, freedom of association and collective bargaining, fair wages, reasonable working hours, health and safety, and legally recognized contractual relationships.



The DNA of the Portuguese people is widely recognized in the textile world. Its success story dates back to the 16<sup>th</sup> century with the construction of the sails used by Portuguese ships. Since that time, the quality of construction and the design of Portuguese brands is appreciated all over the world, so these were the bases that contributed to the fact that, nowadays, Portuguese textiles mean flexibility, speed, consolidated knowledge and innovation. Based on these premises, TH Clothes continues to invest heavily in the quality of its products and in the expansion of its ranges, always with the vision of a future marked by differentiation and added value at the most diverse levels.



TH Clothes has always taken on a huge commitment with the quality of its products. Proof of this is the obtaining of the Standard 100 by Oeko-Tex certificate, which aims to guarantee the use of regulated substances free from health hazards. Obtaining this certificate is a worldwide synonym that ensures responsible textile manufacturing, and consequently, represents a guarantee for industry, commerce and consumers.





Today our vision is a reality. The Better Cotton Initiative (BCI), or simply Better Cotton, is the largest cotton sustainability program in the world. In just over a decade, BCI has managed to convince stakeholders that span the sector to be its partners, namely, farmers, ginners, spinners, suppliers, manufacturers, brand owners, retailers, adding now more than 2,300 members in the Better Cotton network.



## RE-BOX

We are currently experiencing a worldwide appeal for a more active and intense awareness of packaging, so, following its plastic reduction process, the brand has increasingly invested in the use of biodegradable materials, such as cardboard. This time, a program was created to reuse all shipping packaging, in order to minimize waste and ensure responsible use.



## LESS PLASTIC! THIS IS NOT JUST AN ACTION, IT'S A POSITION!

TH Clothes takes environmental responsibility very seriously, and it's precisely for this reason, and committed to reducing plastic consumption in our transactions, that we have decided to reduce drastically this material in most of our packaging. In addition to this measure, we have eliminated plastic straps in our boxes, which is another step in strengthening our commitment to environmental responsibility.

## INDEX

- 10 **T-SHIRTS**
- 12 LUANDA
- 14 SOFIA
- 16 FAIR [new](#)
- 18 ANKARA  
ANKARA WOMEN
- 20 ATHENS  
ATHENS WOMEN
- 22 BUCHAREST  
BUCHAREST WOMEN
- 24 IBIZA
- 26 TIRANA
- 28 SAN MARINO
- 30 **POLO SHIRTS**
- 32 ADAM  
EVE
- 34 BERLIN  
BERLIN WOMEN
- 36 MONACO  
MONACO WOMEN
- 38 ROME  
ROME WOMEN
- 40 BERN  
BERN WOMEN
- 42 DHAKA
- 44 **SWEATSHIRTS**
- 46 DELTA
- 48 PHOENIX
- 50 COLOMBO
- 52 MOSCOW
- 54 BUDAPEST
- 56 AMSTERDAM  
AMSTERDAM WOMEN
- 58 KARACHI [new](#)
- 60 **SPORTS**
- 62 MOVE [new](#)
- 64 TUBE [new](#)
- 66 **JACKETS & SOFTSHELLS**
- 68 GAMA  
GAMA WOMEN
- 70 VIENNA
- 72 HELSINKI  
HELSINKI WOMEN
- 74 EANES
- 76 ZAGREB  
ZAGREB WOMEN
- 78 BAKU
- 80 LIUBLIANA
- 82 BRUSSELS
- 84 DUBLIN
- 86 SKOPJE
- 88 OPORTO
- 90 **CLASSIC**
- 92 BATALHA  
BATALHA WOMEN
- 94 PARIS  
PARIS WOMEN
- 96 TOKYO  
TOKYO WOMEN
- 98 LONDON  
LONDON WOMEN
- 100 MILAN  
MILAN WOMEN
- 102 **KIDS**
- 104 QUITO
- 106 ANKARA KIDS
- 108 MOVE KIDS [new](#)
- 110 PHOENIX KIDS
- 112 DELTA KIDS [new](#)
- 114 ADAM KIDS
- 116 DUBLIN KIDS
- 118 DIAS
- 120 **WORKWEAR**
- 122 VADUZ
- 124 ASTANA
- 126 CARGO [new](#)
- 128 WARSAW
- 130 BRATISLAVA  
TALLINN
- 132 MINSK
- 134 PIXEL [new](#)
- 136 STOCKHOLM
- 138 ALEXANDRIA [new](#)
- 140 ZAGREB WORK
- 142 **ACCESSORIES**
- 144 RODRIGO
- 146 CABRAL
- 148 **TECHNICAL INFORMATION**
- 160 COLOR PALETTE



# SYNTAX



FITS U



TOP SELLER



SUBLIMATION



WINDPROOF



EXTRA COMFORT



BREATHABLE



WASHABLE AT 60°



WATERPROOF



DIRECT PRINTING



WATER RESISTANT



HIGH VISIBILITY



WATER REPELLENT



GEMINI



SOFT TOUCH



ULTRA LIGHT



UNISEX



KIDS



STRETCH



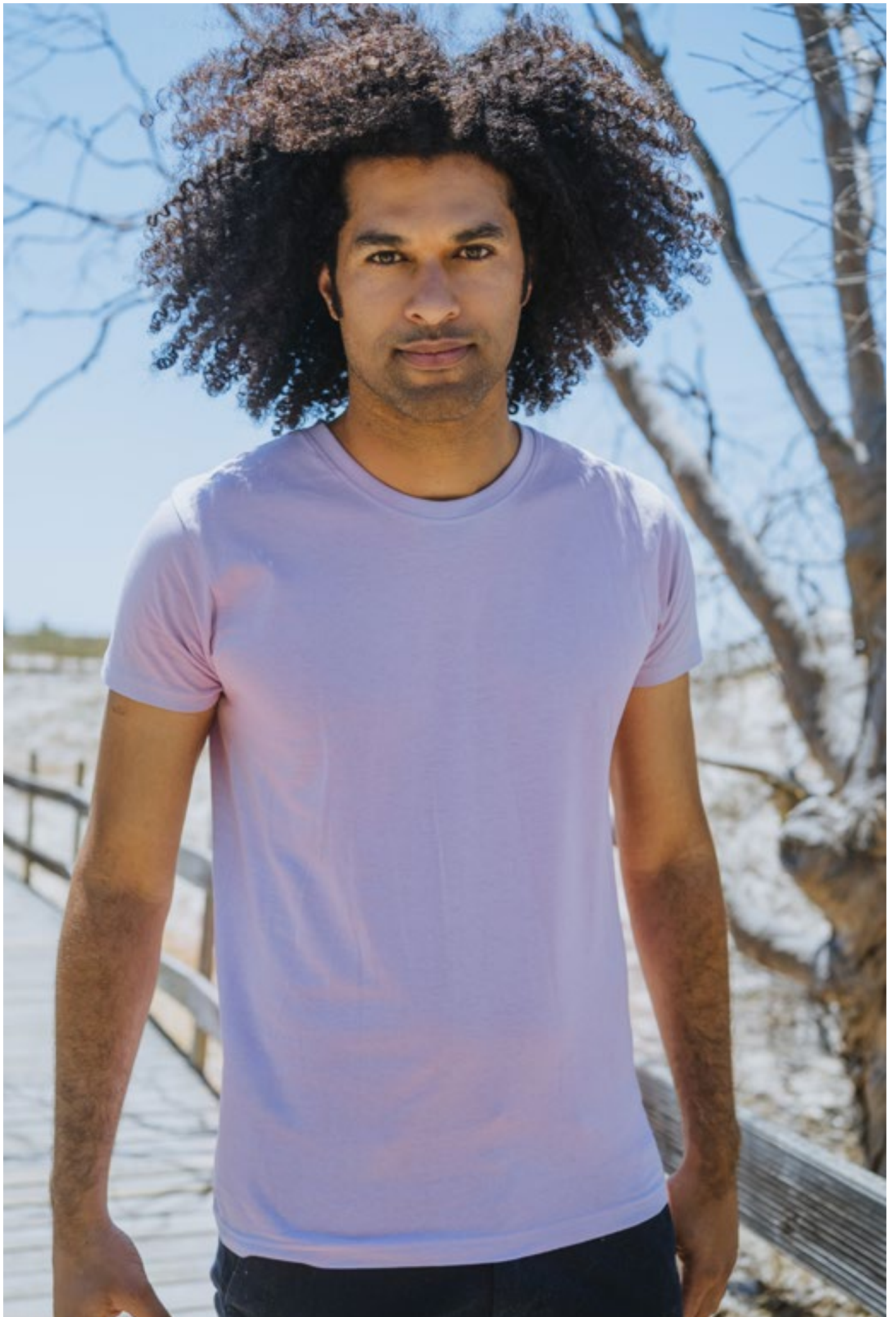
REMOVABLE LABEL

## T - S H I R T S

T-shirts continue to be a favorite piece of clothing for most people. They have the perfect style, are comfortable, practical, and always in fashion. In the promotional market, t-shirts are the vehicle most used by brands to create visibility.









# LUANDA



**Men's t-shirt 150 g/m<sup>2</sup>**

- Jersey 100% cotton
- Carded cotton yarn
- 1x1 rib collar
- Jersey reinforcement tape
- Double stitching on the sleeves and bottom of the article
- Tubular
- Regular cut



**SIZES**

Width / Height

**XS**

47/67 cm

**S**

50/69 cm

**M**

53/72 cm

**L**

56/74 cm

**XL**

59/76 cm

**XXL**

62/79 cm

**3XL**

65/82 cm



white



pastel yellow



orchid pink



aqua



apple green



**new** apricot



**new** lavender



ash<sup>3</sup>



lemon



pastel salmon



pastel blue



kelly green



**new** sand



grey melange<sup>2</sup>



yellow



red



royal blue



jade green



atoll blue



grey



mustard



burgundy



eclipse blue



army



fuchsia



black



orange



brown



navy blue



forest green<sup>1</sup>



purple

1. 65% cotton / 35% polyester
2. 90% cotton / 10% viscose
3. 98% cotton / 2% viscose





# SOFIA



**Women's t-shirt 150 g/m<sup>2</sup>**

- Jersey 100% cotton
- Carded cotton yarn
- Double thin jersey collar
- Reinforcement satin tape inside the collar
- Double stitching on sleeves and bottom of the article
- Fitted cut
- Cut and sewn

1. 90% cotton / 10% viscose
2. 98% cotton / 2% viscose
3. 65% cotton / 35% polyester



**SIZES**

Width / Height

**S**

41/60 cm

**M**

44/62 cm

**L**

47/64 cm

**XL**

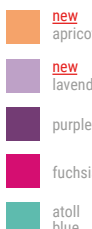
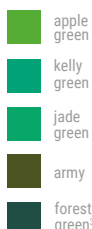
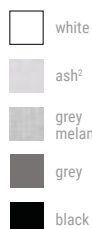
50/66 cm

**XXL**

53/68 cm

**3XL**

56/70 cm







# FAIR

new



**Unisex t-shirt 150 g/m<sup>2</sup>**

- Jersey 100% cotton provided from a more sustainable cotton cultivation
- 1x1 rib collar with jersey reinforcement tape
- Round neck t-shirt
- Double stitching on the sleeves and bottom of the article
- Tubular (except sizes XXXS and XXS)
- **Supports Better Cotton Initiative**



**SIZES**

Width / Height

**XXXS**

43/61 cm

**XXS**

45/64 cm

**XS**

47/67 cm

**S**

50/69 cm

**M**

53/72 cm

**L**

56/74 cm

**XL**

59/76 cm

**XXL**

62/79 cm

**3XL**

65/82 cm



white



black



eclipse blue



candy blue



candy green



candy pink



eclipse blue



white topstitch



Perched on an impressive craggy hillside on the banks of the Enguri Su, Ankara, the capital of Turkey, is a modern and cosmopolitan European metropolis dotted with reminders of its diverse history and unparalleled strength and versatility. These are attributes that we tried to recreate in the creation of this t-shirt, so that it is a unique and timeless piece.



# ANKARA



**Men's t-shirt 190 g/m<sup>2</sup>**

- Jersey 100% cotton
- Carded cotton yarn
- 1x1 rib collar with reinforcement jersey tape
- Double stitching on the sleeves and bottom of the article
- Tubular
- Regular cut



**SIZES**

Width / Height

**XS**  
47/67 cm

**S**  
50/69 cm

**M**  
53/72 cm

**L**  
56/74 cm

**XL**  
59/76 cm

**XXL**  
62/79 cm

**3XL**  
65/82 cm

**4XL#**  
68/85 cm



white



black



orchid pink



aqua



atoll blue



**new** lavender



**new** sand



grey melange<sup>1</sup>



yellow



red



eclipse blue



royal blue



**new** apricot



grey



orange



burgundy



navy blue



kelly green



apple green

1. 90% cotton / 10% viscose

# Only available in white, black, navy blue and grey melange

# ANKARA WOMEN



**Women's t-shirt 190 g/m<sup>2</sup>**

- Jersey 100% cotton
- Carded cotton yarn
- Double thin jersey collar
- Reinforcement satin tape inside the collar
- Double stitching on sleeves and bottom of the article
- Cut and sewn
- Fitted cut



**SIZES**

Width / Height

**S**  
41/62 cm

**M**  
44/64 cm

**L**  
47/66 cm

**XL**  
50/68 cm

**XXL**  
53/70 cm



white



royal blue



apple green



**new** grey



**new** orange



**new** lavender



**new** kelly green



grey melange<sup>1</sup>



eclipse blue



atoll blue



yellow



**new** apricot



**new** sand



black



navy blue



aqua



red

1. 90% cotton / 10% viscose



There is no place like Athens to take a trip to ancient Greek cultures and immerse yourself in a vibrant, fresh and open-world climate. Just like the city, this is a timeless product, with a unique comfort transmitted by the best fabrics selection. Athens is the perfect companion for hot summer days.





# ATHENS



**Men's "V-neck" t-shirt 150 g/m<sup>2</sup>**

- Jersey 100% cotton
- Carded cotton yarn
- "V" neck with jersey collar
- Reinforcement tape inside the collar
- Double stitching on sleeves and bottom of the article
- Tubular
- Regular cut



**SIZES**

Width / Height

**S**

50/69 cm

**M**

53/72 cm

**L**

56/74 cm

**XL**

59/76 cm

**XXL**

62/79 cm



white



black



navy blue



eclipse blue



navy blue melange<sup>1</sup>



red melange<sup>1</sup>



green melange<sup>1</sup>



grey melange<sup>2</sup>

1. 60% cotton / 40% polyester
2. 90% cotton / 10% viscose

# ATHENS WOMEN



**Women's "V-neck" t-shirt 150 g/m<sup>2</sup>**

- Jersey 100% cotton
- Carded cotton yarn
- Overlapped "V" neck
- Jersey collar
- Double stitching on sleeves and bottom of the article
- Reinforcement tape inside the collar
- Cut and sewn
- Fitted cut



**SIZES**

Width / Height

**S**

41/60 cm

**M**

44/62 cm

**L**

47/64 cm

**XL**

50/66 cm

**XXL**

53/68 cm



white



black



eclipse blue



navy blue melange<sup>1</sup>



green melange<sup>1</sup>



red melange<sup>1</sup>



fuchsia



grey melange<sup>2</sup>

1. 60% cotton / 40% polyester
2. 90% cotton / 10% viscose



Like the Romanian capital Bucharest, with its mix of architectural styles, this is a range that reflects a unique identity combining the relaxation of a t-shirt with the unique comfort of cotton.



# BUCHAREST



Men's long sleeve t-shirt 150 g/m<sup>2</sup>

- Jersey 100% cotton
- Carded cotton yarn
- 1x1 rib collar with reinforcement jersey tape
- Double stitching on sleeves and bottom of the article
- Tubular
- Regular cut



**SIZES**

Width / Height

**S**  
50/71 cm

**M**  
52/73 cm

**L**  
54/74,5 cm

**XL**  
58/76,5 cm

**XXL**  
61/78 cm

**3XL#**  
64/79,5 cm



white



black



navy blue



royal blue



red melange<sup>1</sup>



red



grey melange<sup>2</sup>

1. 60% cotton / 40% polyester
2. 90% cotton / 10% viscose

# Only available in white, black, navy blue, royal blue, grey melange and red

# BUCHAREST WOMEN



Women's long sleeve t-shirt 150 g/m<sup>2</sup>

- Jersey 100% cotton
- Carded cotton yarn
- Reinforcement jersey tape inside the collar
- Double stitching on sleeves and bottom of the article
- Cut and sewn
- Fitted cut



**SIZES**

Width / Height

**S**  
42/61 cm

**M**  
44/63 cm

**L**  
46/65 cm

**XL**  
48/67 cm

**XXL**  
50/69 cm



white



black



navy blue



royal blue



navy blue melange<sup>1</sup>



red melange<sup>1</sup>



red



grey melange<sup>2</sup>

1. 60% cotton / 40% polyester
2. 90% cotton / 10% viscose







## IBIZA

Men's tank top 140 g/m<sup>2</sup>

- Jersey 100% cotton
- Carded cotton yarn
- Deep armholes
- Armhole and neckline with bias binding
- Double stitching on the bottom of the article
- Cut and sewn
- Round neck



## SIZES

Width / Height

## XS

47/70 cm

## S

50/72 cm

## M

53/74 cm

## L

56/76 cm

## XL

59/78 cm

## XXL

62/79 cm

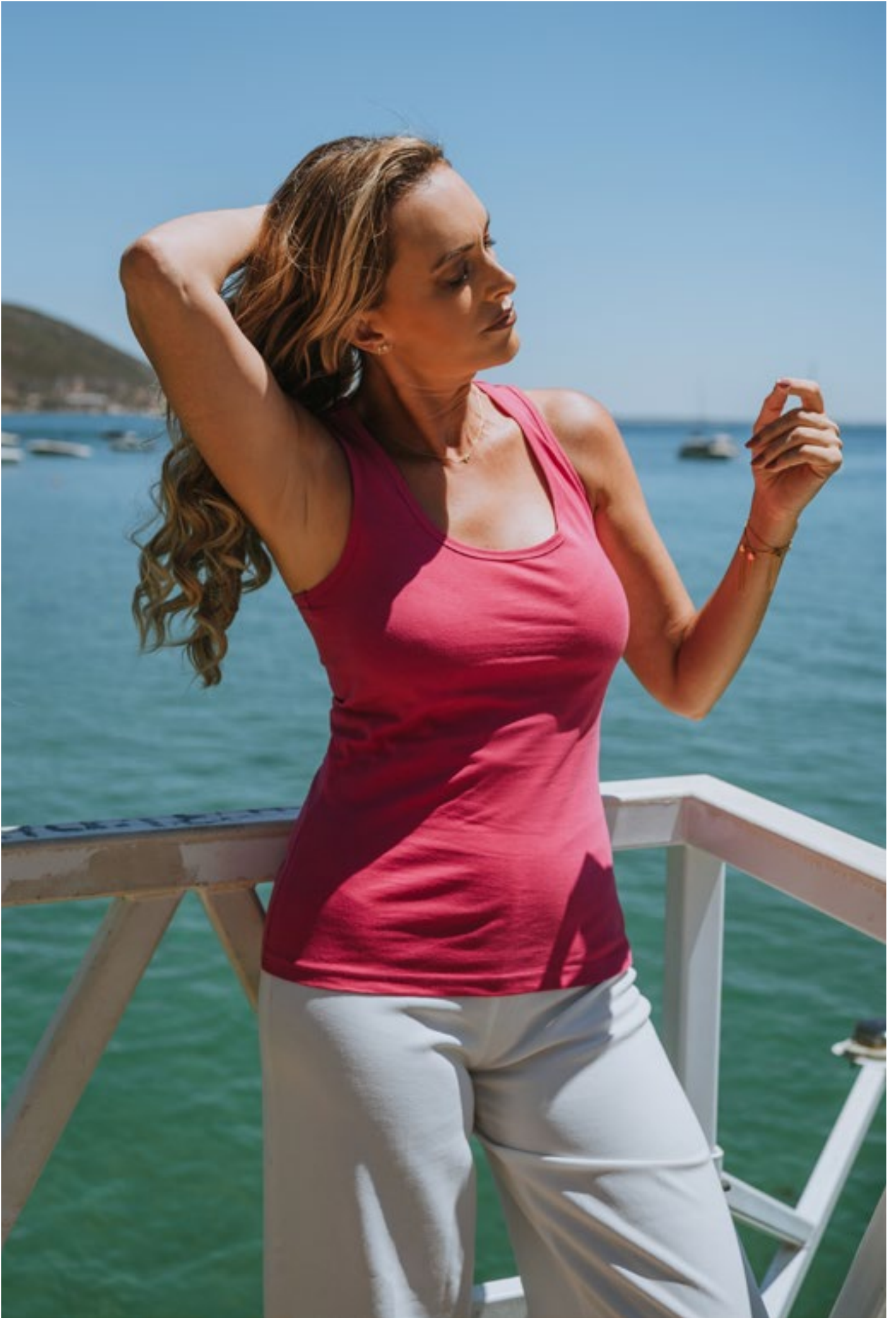


white



black

grey  
melange<sup>1</sup>



# TIRANA



**Women's racerback tank top**  
**160 g/m<sup>2</sup>**

- Jersey 100% cotton
- Carded cotton yarn
- Racerback
- Round neck
- Armhole and neckline with bias binding
- Double stitching on the bottom of the article
- Cut and sewn
- Fitted cut



**SIZES**

Width / Height

**S**

37,5/62 cm

**M**

40,5/64 cm

**L**

43,5/66 cm

**XL**

46,5/68 cm

**XXL**

49,5/70 cm



white



black



caribbean green



aqua



red



sunset orange



fuchsia





# SAN MARINO



**Men's t-shirt 195 g/m<sup>2</sup>**

- Piqué knit 100% combed cotton
- Thin collar
- Sleeves and collar in 1x1 rib
- Reinforcement piqué tape inside the collar
- Stylish and modern
- Cut and sewn
- Regular cut



**SIZES**

Width / Height

**S**

51/69 cm

**M**

53/71 cm

**L**

55/73 cm

**XL**

59/75 cm

**XXL**

62/77 cm



white



black



grey melange<sup>1</sup>



eclipse blue

## P O L O   S H I R T S

Polo shirts have been constantly evolving since their invention in the 19<sup>th</sup> century. In addition to its common use linked to sports, polo shirts are gaining more and more fans in the promotional market. Being a product of excellence, our polo shirts are a unique and distinct product that go beyond refinement, managing to reconcile elements such as quality, durability, and detailed finishes.







The Adam and Eve polo shirts were named following the principle that they would be the first two pieces to mark the future growth of the TH Clothes brand. Their “offspring” is now over 50 articles.





# ADAM



**Men's polo shirt 195 g/m<sup>2</sup>**

- Piqué 100% cotton
- 1x1 rib collar and cuffs
- Carded cotton yarn
- Piqué reinforcement tape inside the collar
- Placket with 3 tone on tone buttons
- Bottom side slits
- Spare button on inside stitching
- Cut and sewn
- Regular cut



SIZES	S	M	L	XL	XXL	3XL	4XL#
Width / Height	46/67,5/70 cm	50/69,5/72 cm	54/71,5/74 cm	58/73/75,5 cm	61/75/77,5 cm	64/78,5/82 cm	68/83/85,5 cm

	white		pastel white		pastel pink		pastel salmon		aqua		mint		apple green
	grey melange <sup>1</sup>		ash <sup>2</sup>		yellow		red		eclipse blue		light blue		kelly green
	grey		pastel yellow		orange		burgundy		navy blue		royal blue		army
	black		sand		mustard		brown						

- 1. 85% cotton / 15% viscose
- 2. 98% cotton / 2% viscose
- # Only available in white, black, navy blue, eclipse blue and grey melange

# EVE



**Women's polo shirt 195 g/m<sup>2</sup>**

- Piqué 100% cotton
- Carded cotton yarn
- 1x1 rib collar and cuffs
- Piqué reinforcement tape inside the collar
- Placket with 4 tone on tone buttons
- Spare button on inside stitching
- Cut and sewn
- Fitted cut



SIZES	S	M	L	XL	XXL
Width / Height	40/60 cm	43/62 cm	46/64 cm	49/66 cm	52/68 cm

	white		black		yellow		pastel salmon		aqua		mint		apple green
	ash <sup>2</sup>		sand		orange		burgundy		eclipse blue		light blue		kelly green
	grey melange <sup>1</sup>		mustard		red		brown		navy blue		royal blue		army
	grey												

- 1. 85% cotton / 15% viscose
- 2. 98% cotton / 2% viscose





# BERLIN



**Men's polo shirt 200 g/m<sup>2</sup>**

- Piqué 65% polyester, 35% cotton
- Carded cotton yarn
- 1x1 rib collar and cuffs
- Piqué reinforcement tape inside the collar
- Reinforced placket with 3 tone on tone buttons
- Spare button on inside stitching
- Cut and sewn
- Regular cut



**SIZES**

Width / Height

**XS**  
42/68 cm

**S**  
46/70 cm

**M**  
50/72 cm

**L**  
54/74 cm

**XL**  
58/75,5 cm

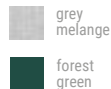
**XXL**  
61/77,5 cm

**3XL**  
64/82 cm



white

black



grey melange

forest green

grey

navy blue

royal blue

burgundy

**new**  
red

# BERLIN WOMEN



**Women's polo shirt 200 g/m<sup>2</sup>**

- Piqué 65% polyester, 35% cotton
- Carded cotton yarn
- 1x1 rib collar and cuffs
- Piqué reinforcement tape inside the collar
- Reinforced placket with 3 tone on tone buttons
- Spare button on inside stitching
- Cut and sewn
- Fitted cut



**SIZES**

Width / Height

**S**  
40/60 cm

**M**  
43/62 cm

**L**  
46/64 cm

**XL**  
49/66 cm

**XXL**  
52/68 cm



white

black



grey melange

forest green

grey

navy blue

royal blue

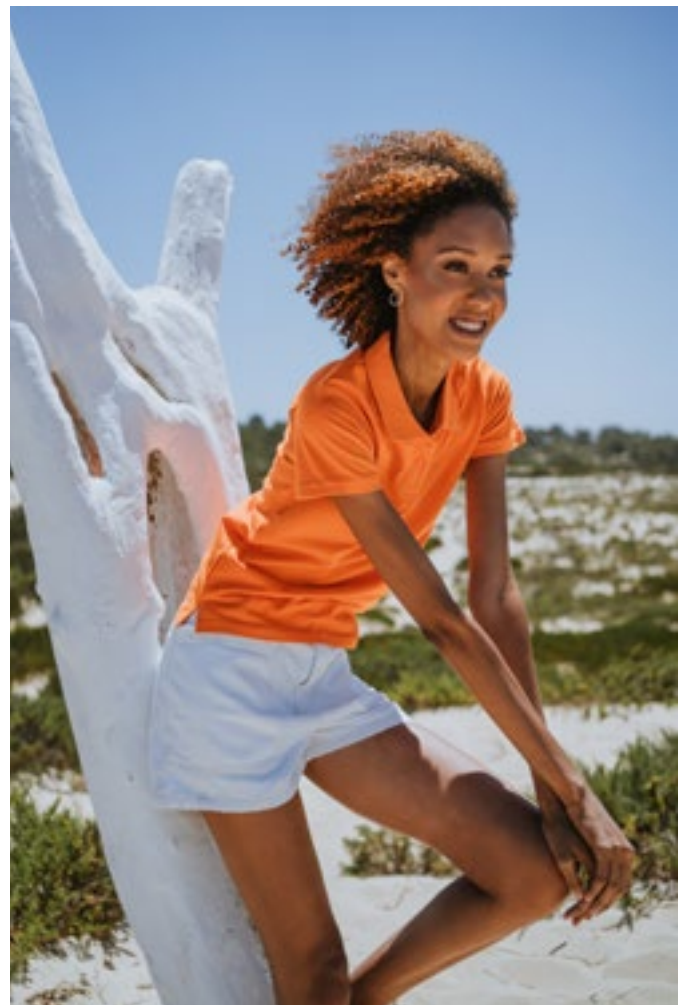
burgundy

**new**  
red





This is the perfect piece for those who like to combine several colors and build a unique and glamorous style just like the Principality of Monaco. It's high grammage combined with the side openings are essential elements for all those who like style and comfort.





# MONACO



**Men's polo shirt 240 g/m<sup>2</sup>**

- Piqué 100% cotton
- Carded cotton yarn
- 1x1 rib collar and cuffs
- Piqué reinforcement tape inside the collar
- Reinforced placket with 3 tone on tone buttons
- Bottom side slits
- Spare button on inside stitching
- Cut and sewn
- Regular cut



**SIZES**

Width / Height

**S**

46/70 cm

**M**

50/72 cm

**L**

54/74 cm

**XL**

58/76 cm

**XXL**

61/78 cm



white

black



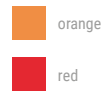
grey

grey melange<sup>1</sup>



yellow

sand



orange

red

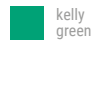


royal blue

eclipse blue



aqua



kelly green

1. 85% cotton / 15% viscose

# MONACO WOMEN



**Women's polo shirt 240 g/m<sup>2</sup>**

- Piqué 100% cotton
- Carded cotton yarn
- 1x1 rib collar and cuffs
- Reinforcement piqué tape inside the collar
- Reinforced placket with 2 tone on tone buttons
- Bottom side slits
- Cut and sewn
- Regular cut
- Spare button on inside stitching



**SIZES**

Width / Height

**S**

43/62 cm

**M**

46/64 cm

**L**

49/66 cm

**XL**

52/68 cm

**XXL**

55/70 cm



white

black



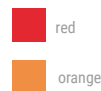
grey melange<sup>1</sup>

grey



yellow

sand



red

orange



royal blue

eclipse blue



aqua

kelly green

1. 85% cotton / 15% viscose



# ROME



**Men's bicolor polo shirt 210 g/m<sup>2</sup>**

- Piqué 100% cotton
- Carded cotton yarn
- 1x1 rib collar and cuffs
- Contrasting bicolor details on collar, placket and sleeves
- Reinforced placket with 3 buttons in contrasting color
- Spare button on inside stitching
- Bottom side slits
- Reinforced tape on the inside the collar



**SIZES**

Width / Height

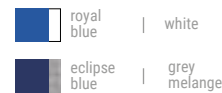
**S**  
48/70 cm

**M**  
51/72 cm

**L**  
54/74 cm

**XL**  
57/76 cm

**XXL**  
60/78 cm



1. 65% cotton / 35% polyester
2. 85% cotton / 15% viscose

# ROME WOMEN



**Women's bicolor polo shirt 210 g/m<sup>2</sup>**

- Piqué 100% cotton
- Carded cotton yarn
- 1x1 rib collar and cuffs
- Contrasting bicolor details on collar, placket and sleeves
- Reinforced placket with 3 buttons in contrasting color
- Spare button on inside stitching
- Bottom side slits
- Fitted cut
- Reinforced tape inside the collar



**SIZES**

Width / Height

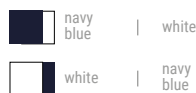
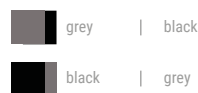
**S**  
42/63 cm

**M**  
45/65 cm

**L**  
48/67 cm

**XL**  
51/69 cm

**XXL**  
53/71 cm



1. 85% cotton / 15% viscose





Suitable for colder climates or mild nights, this is a long-sleeved piqué polo shirt that combines good taste and sobriety with a relaxed style.





# BERN



Men's long sleeve polo shirt  
210 g/m<sup>2</sup>

- Piqué 100% cotton
- Carded cotton yarn
- 1x1 rib collar and cuffs
- Piqué reinforcement tape inside the collar
- Reinforced placket with 3 tone on tone buttons
- Bottom side slits
- Spare button on inside stitching
- Cut and sewn
- Regular cut



**SIZES**

Width / Height

**S**  
46/67,5/70 cm

**M**  
50/69,5/72 cm

**L**  
54/71,5/74 cm

**XL**  
58/73/75,5 cm

**XXL**  
61/75/77,5 cm

**3XL**  
64/79,5/82cm



white

black



grey melange<sup>1</sup>

grey



royal blue

navy blue



orange

sand

red

burgundy

apple green

1. 85% cotton / 15% viscose

# BERN WOMEN



Women's long sleeve polo shirt  
210 g/m<sup>2</sup>

- Piqué 100% cotton
- Carded cotton yarn
- 1x1 rib collar
- Piqué reinforcement tape inside the collar
- Double stitching on sleeves
- Reinforced placket with 4 tone on tone buttons
- Spare button on inside stitching
- Cut and sewn
- Fitted cut



**SIZES**

Width / Height

**S**  
40/62 cm

**M**  
43/64 cm

**L**  
46/66 cm

**XL**  
49/68 cm

**XXL**  
52/70 cm



white

black



grey melange<sup>1</sup>

grey



royal blue

navy blue

red

burgundy

fuchsia

1. 85% cotton / 15% viscose



# DHAKA



Polo shirt with pocket for men 195 g/m<sup>2</sup>

- Piqué 100% cotton
- Carded cotton yarn
- 1x1 rib collar and cuffs
- Stylish rib collar and cuffs
- Piqué reinforcement tape inside the collar
- Reinforced placket with 2 tone on tone buttons
- Single welt pocket in the front
- Bottom side slits
- Spare button on inside stitching
- Cut and sewn
- Regular cut



**SIZES**

Width / Height

**S**

46/70 cm

**M**

50/72 cm

**L**

54/74 cm

**XL**

58/75,5 cm

**XXL**

61/77,5 cm



white



black



grey melange<sup>1</sup>



eclipse blue



royal blue



red

1. 85% cotton / 15% viscose



## S W E A T S H I R T S

Sweatshirts have been part of our daily lives for decades. They are the perfect piece for the most diverse environments. Its heating capacity, comfort and versatility are perfect features to make it a desirable piece for use in less formal and more relaxed environments.







# DELTA



**Unisex sweatshirt 300 g/m<sup>2</sup>**

- 50% cotton, 50% polyester
- Carded interior
- Rib 1x1 and double stitching on cuffs, collar and bottom of the article
- Reinforcing tape at the neck



SIZES		XS#	S	M	L	XL	XXL	3XL#	4XL#				
Width / Height		49/65 cm	52/67 cm	55/69 cm	58/71 cm	61/73 cm	64/75 cm	67/77 cm	70/79 cm				
white	caribbean green	orange	pastel salmon	kelly green	<b>new</b> lavender	<b>new</b> apricot	grey melange	royal blue	red	burgundy	army	forest green	<b>new</b> brown
black	navy blue	grey											

# Only available in black, navy blue and grey melange



# PHOENIX



Unisex hooded sweatshirt  
320 g/m<sup>2</sup>

- 50% cotton, 50% polyester
- Carded interior
- Rib 1x1 on cuffs and bottom of the article
- Kangaroo pocket
- Hood with eyelets and tone on tone drawstring



**SIZES**

Width / Height

**XS**

49/64 cm

**S**

52/66 cm

**M**

55/68 cm

**L**

58/70 cm

**XL**

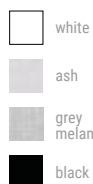
61/72 cm

**XXL**

64/74 cm

**3XL#**

67/76 cm



white

ash

grey melange

black



pastel yellow

lemon

mustard

orange



pastel salmon

red

burgundy

purple

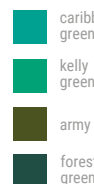


pastel green

pastel blue

royal blue

navy blue

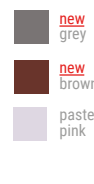


caribbean green

kelly green

army

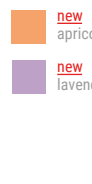
forest green



**new** grey

**new** brown

pastel pink



**new** apricot

**new** lavender

# Only available in black, navy blue and grey melange





# COLOMBO



- Unisex sweatshirt in french terry  
240 g/m<sup>2</sup>
- French terry 50% cotton, 50% polyester
  - 1x1 rib on cuffs, collar and bottom of the article
  - Reinforcing tape at neck
  - Regular cut



**SIZES**

Width / Height

**S**

52/67 cm

**M**

55/69 cm

**L**

58/71 cm

**XL**

61/73 cm

**XXL**

64/75 cm

**3XL**

67/77 cm



white

black



pastel yellow

grey melange



pastel salmon

red



royal blue

navy blue



caribbean green



**new** lavender



**new** apricot







# MOSCOW



Unisex bicolor sweatshirt  
320 g/m<sup>2</sup>

- 50% cotton, 50% polyester
- Carded interior
- Rib 1x1 on cuffs and bottom of the article
- Kangaroo pocket
- Hood and drawstrings in contrasting color



**SIZES**

Width / Height

**XS#**

49/64 cm

**S**

52/66 cm

**M**

55/68 cm

**L**

58/70 cm

**XL**

61/72 cm

**XXL**

64/74 cm



# Only available in black / grey melange, grey melange / navy blue and navy blue / grey melange



# BUDAPEST



Unisex sweatshirt with 1/4 zip  
320 g/m<sup>2</sup>

- 50% cotton, 50% polyester
- Carded interior
- Tone on tone 1/4 zip
- Rib 1x1 on cuffs and bottom of the article



**SIZES**

Width / Height

**S**

51/67 cm

**M**

54/69 cm

**L**

57/71 cm

**XL**

60/73 cm

**XXL**

63/75 cm



black



anthracite melange



grey melange



navy blue



royal blue



navy blue melange



**new**  
red



forest green





# AMSTERDAM



Men's hooded full zipped sweatshirt  
320 g/m<sup>2</sup>

- 50% cotton, 50% polyester
- 2 side pockets
- Lined hood with tone on tone drawstring
- Carded interior
- Covered zip
- Cuffs and bottom of the article in 1x1 rib
- Inserted zipper with slider and handle



**SIZES**

Width / Height

**S**

52/70 cm

**M**

55/72 cm

**L**

58/74 cm

**XL**

61/76 cm

**XXL**

64/78 cm



white



black



navy blue



red



**new**  
royal blue



**new**  
lavender



**new**  
apricot



grey melange



navy blue melange



red melange

# AMSTERDAM WOMEN



Women's hooded full zipped sweatshirt  
320 g/m<sup>2</sup>

- 50% cotton, 50% polyester
- 2 side pockets
- Lined hood with tone on tone drawstring
- Carded interior
- Covered zip
- Cuffs and bottom of the article in 1x1 rib
- Inserted zipper with slider and handle



**SIZES**

Width / Height

**S**

46/64 cm

**M**

49/66 cm

**L**

52/68 cm

**XL**

55/70 cm

**XXL**

58/72 cm



white



black



navy blue



red



**new**  
royal blue



**new**  
lavender



**new**  
apricot



grey melange



navy blue melange



red melange





# KARACHI



new



**Unisex hooded sweatshirt 280 g/m<sup>2</sup>**

- 80% cotton provided from a more sustainable cotton cultivation, 20% recycled polyester
- Carded interior
- Rib 1x1 on cuffs and hem
- Kangaroo pocket
- 3 panels hood with tone on tone drawstring with metal tip
- Metal eyelets
- Jersey lined hood
- **Supports Better Cotton Initiative**



**SIZES**

Width / Height

**XS**

49/64 cm

**S**

52/66 cm

**M**

55/68 cm

**L**

58/70 cm

**XL**

61/72 cm

**XXL**

64/74 cm

**3XL**

67/76 cm



white

navy blue



black

white topstitch



navy blue



candy blue



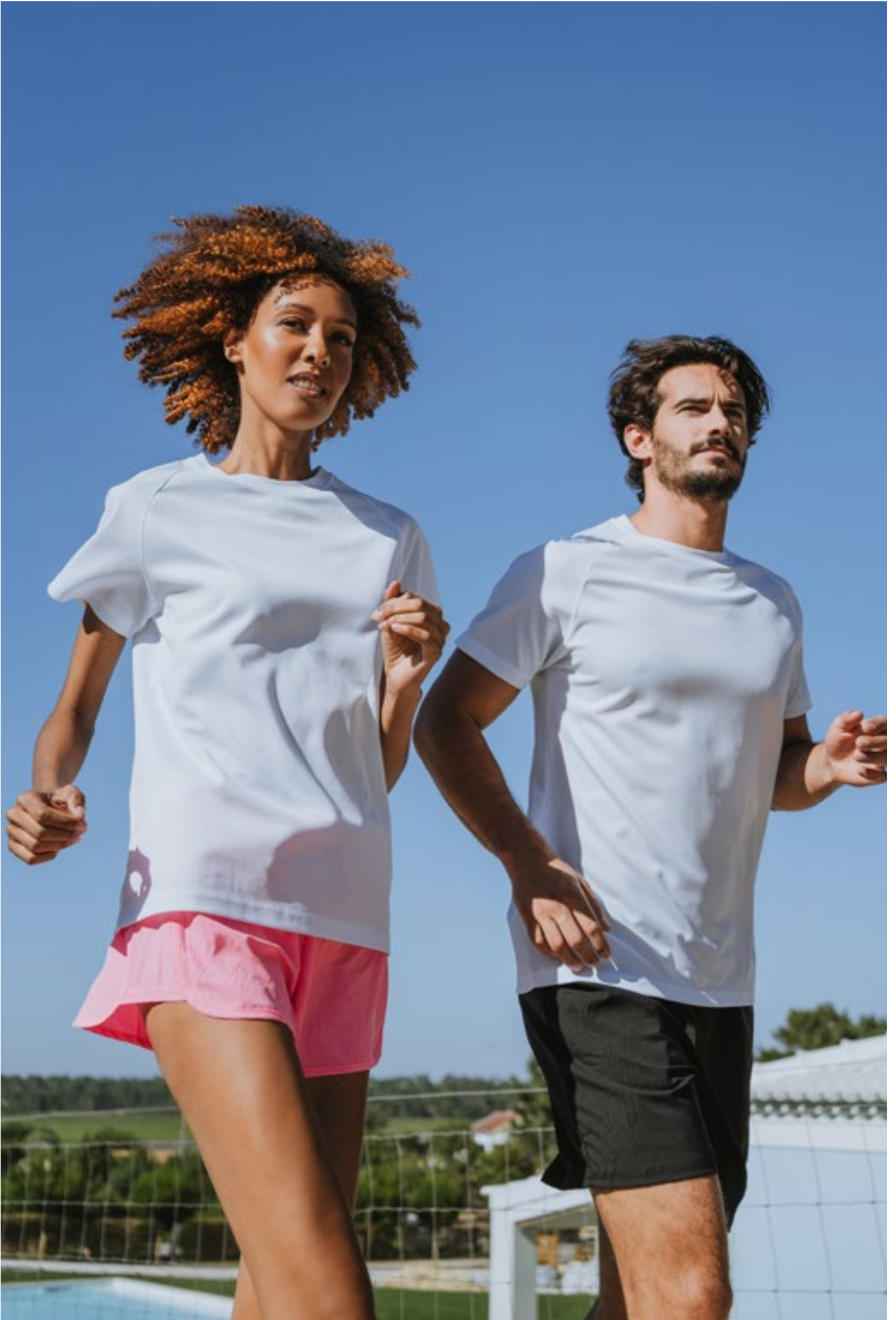
candy green



candy pink

## S P O R T S

The TH Clothes' sports range was designed according to modern trends in the promotional market. For this, we diversified the cuts and produced the colors you really need. In its design, we carefully choose high quality materials, with the aim of promoting maximum comfort and lightness.







# MOVE



new



**Technical t-shirt 150 g/m<sup>2</sup>**

- Piqué mesh, 100% polyester
- Technical t-shirt with raglan sleeves
- Breathable fabric
- Round collar
- Patch seam in piqué at the collar
- Regular cut
- Double stitching on the sleeves and bottom of the article
- Cut and sewn



**SIZES**

Width / Height

**XS**

47/67 cm

**S**

50/69 cm

**M**

53/72 cm

**L**

56/74 cm

**XL**

59/76 cm

**XXL**

62/79 cm



white

black



royal blue

navy blue



red

coral fluo



orange fluo



lime green



yellow fluo



light grey





# TUBE

new



**MADE IN**  **PORTUGAL**



T-shirt for water sports  
190 g/m<sup>2</sup>

- Jersey 90% recycled textured polyester, 10% elastane
- Collar in rib 1x1
- Round neck t-shirt
- Cut and sewn
- Double stitching on the sleeves and bottom of the article
- Made in Portugal
- Each t-shirt is packed individually in cardboard tube with biodegradable PLA lids



**SIZES**

Width / Height

**S**

51,5/70,5 cm

**M**

54,5/73 cm

**L**

57,5/75 cm

**XL**

60,5/77,5 cm



white

black



yellow

cyan blue



magenta



candy blue



candy green



candy pink

## J A C K E T S   A N D   S O F T S H E L L S

Coats are essential parts of the winter promotional market. The TH Clothes' range presents several solutions according to the markets where the brand is represented. With a focus on comfort, variety and versatility, we present differentiated products for both man and woman.







# GAMA



Men's high density polar fleece jacket **300 g/m<sup>2</sup>**

- Polar fleece 100% polyester high density
- Tone on tone **YKK®** zipper
- Anti-pilling
- Back half-moon yoke
- 2 side pockets with zipper and flaps
- Elasticated cuffs
- Elasticated drawstring at the bottom of the article
- Reinforcement tape inside the collar



**SIZES**

Width / Height

**S**  
58/70

**M**  
60/72 cm

**L**  
63/74 cm

**XL**  
66/76 cm

**XXL**  
69/78 cm

**3XL**  
72/80cm



black



medium grey



eclipse blue



royal blue



forest green



pure red

# GAMA WOMEN



Women's high density polar fleece jacket **300 g/m<sup>2</sup>**

- Polar fleece 100% polyester high density
- Tone on tone **YKK®** zipper
- Anti-pilling
- Back half-moon yoke
- 2 side pockets with zippers and flaps
- Elasticated cuffs
- Elasticated drawstring at bottom
- Reinforcement tape inside the collar
- Fitted cut



**SIZES**

Width / Height

**S**  
48/62 cm

**M**  
51/64 cm

**L**  
54/66 cm

**XL**  
57/68 cm

**XXL**  
60/70 cm



black



medium grey



eclipse blue



royal blue



forest green



pure red







# VIENNA



Unisex polar fleece with ¼ zip  
260 g/m<sup>2</sup>

- 100% polyester
- Tone on tone **YKK®** zipper
- Elastic tape on the cuffs
- Zipper protection for extra comfort



**SIZES**

Width / Height

**S**

51/69 cm

**M**

54/71 cm

**L**

57/73 cm

**XL**

60/75 cm

**XXL**

63/77 cm



black



medium grey



navy blue



royal blue



red



# HELSINKI



Men's polar fleece jacket **260 g/m<sup>2</sup>**

- 100% polyester
- Tone on tone **YKK®** zipper
- Side pockets
- Elastic tape on the cuffs
- Zipper protection for extra comfort



**SIZES**

Width / Height

**S**  
51/69 cm

**M**  
54/71 cm

**L**  
57/73 cm

**XL**  
60/75 cm

**XXL**  
63/77 cm

**3XL**  
66/79 cm



black



medium grey



navy blue



royal blue



forest green



red

# HELSINKI WOMEN



Women's polar fleece jacket **260 g/m<sup>2</sup>**

- 100% polyester
- Tone on tone **YKK®** zipper
- Side pockets
- Elastic tape on the cuffs
- Zipper protection for extra comfort
- Fitted cut



**SIZES**

Width / Height

**S**  
44/62 cm

**M**  
46/64 cm

**L**  
48/66 cm

**XL**  
51/68 cm

**XXL**  
54/70 cm



black



medium grey



navy blue



royal blue



forest green



red





## EANES



Unisex softshell jacket with zipper  
280 g/m<sup>2</sup>

- 96% polyester, 4% elastane with two layers
- Water resistant
- Polar fleece lining
- 2 front pockets with zippers and one diagonal chest pocket
- Adjustable cuffs with velcro strap
- Adjustable stoppers with elastic drawstring at the bottom
- Puller with rubber ending
- Without hood
- **YKK®** front zipper



## SIZES

Width / Height

## XS

51/66 cm

## S

54/68 cm

## M

57/70 cm

## L

60/72 cm

## XL

63/74 cm

## XXL

66/76 cm



black



grey

navy  
blueroyal  
blue

red







# ZAGREB



Men's softshell with removable hood **280 g/m<sup>2</sup>**

- 96% polyester, 4% elastane with two layers
- Water resistant
- Fleece lining
- 2 front pockets with zippers and one diagonal chest pocket
- Adjustable cuffs with velcro strap
- Removable hood with drawstring, adjustable stoppers and velcro strip which fits inside the collar
- Rounded lower back
- **YKK®** zipper opening



**SIZES**

Width / Height

**S**  
54/68/72 cm

**M**  
57/70/74 cm

**L**  
60/72/76 cm

**XL**  
63/74/78 cm

**XXL**  
66/76/80 cm



black

grey



navy blue



petrol blue



royal blue



forest green



army



red

# ZAGREB WOMEN



Women's softshell with removable hood **280 g/m<sup>2</sup>**

- 96% polyester, 4% elastane with two layers
- Water resistant
- Fleece lining
- 2 front pockets with zipper and one diagonal chest pocket
- Adjustable cuffs with a velcro strap
- Removable hood with drawstring, adjustable stoppers and velcro strip which fits inside the collar
- Rounded lower back
- Fitted cut
- **YKK®** zipper opening



**SIZES**

Width / Height

**S**  
48/62/66 cm

**M**  
51/64/68 cm

**L**  
54/66/70 cm

**XL**  
57/68/72 cm

**XXL**  
60/70/74 cm



black

grey



navy blue



army



forest green



petrol blue



royal blue



red



# BAKU



**Softshell vest 280 g/m<sup>2</sup>**

- 96% polyester, 4% elastane with two layers
- Two front pockets with zippers
- Welt pocket in the chest
- Vest with a longer back
- Water resistant
- **YKK®** zipper opening



**SIZES**

Width / Height

**S**

55/69/73 cm

**M**

57/71/75 cm

**L**

59/73/77 cm

**XL**

61/75/79 cm

**XXL**

63/77/81 cm

**3XL**

65/79/83 cm



black



grey



navy blue



royal blue



red





# LIUBLIANA



**Padded unisex parka exterior:**  
**240 g/m<sup>2</sup>, interior: 65 g/m<sup>2</sup>,**  
**wadding: 80g/m<sup>2</sup>**



**SIZES**

Width / Height

**XS**

56/76 cm

**S**

58/77 cm

**M**

60/78 cm

**L**

62/79 cm

**XL**

64/80 cm

**XXL**

66/81 cm

- Exterior: 100% polyester pongee 240 and waterproof PVC coating
- Interior: 100% taffeta polyester
- Wadding: 100% polyester
- Black fleece lined collar which closes with a velcro strip
- Fold away hood in the collar, adjustable with tone on tone tightening drawstrings with stoppers
- Front opening with flap, tone on tone zipper, velcro and black snap buttons
- 2 outside pockets with flap
- 2 interior pockets (1 for mobile phone), with velcro closure
- 2x2 rib knit interior cuffs
- Adjustable outer cuffs with velcro straps
- Interior customization zip at lower back
- Heat-sealed seams
- **YKK®** tone on tone zipper opening
- Modern cut



black



grey



navy blue



royal blue



red



forest green





## BRUSSELS



Unisex padded down parka  
**exterior: 75g/m<sup>2</sup> Interior: 50g/m<sup>2</sup>**  
**wadding: 335 g/m<sup>2</sup>**



## SIZES

Width / Height

XS

55/86 cm

S

57/89 cm

M

59,5/93 cm

L

61,5/96 cm

XL

63,5/99 cm

XXL

65,5/102 cm

3XL

67,5/105 cm

- Exterior: 300T polyester pongee coating
- Interior: 100% polyester
- Wadding: 100% polyester
- Waterproof zippers
- Elasticated cuffs
- Decorative topstitches
- Lined and padded hood
- 4 front pockets with zippers and one interior pocket



black



navy blue



## DUBLIN



Unisex windbreaker with mesh lined hood **65 g/m<sup>2</sup>**

- Taffeta 100% polyester with PU coating
- Hood with tightening stoppers and mesh lining
- Side pockets with zipper
- Elastic drawstring with stopper at the bottom

**SIZES**

Width / Height

**XS**

53/65 cm

**S**

55/67 cm

**M**

57/69 cm

**L**

59/71 cm

**XL**

61/73 cm

**XXL**

63/75 cm



black



navy blue



royal blue



red





# SKOPJE



Men's full zip hooded jacket  
**exterior: 280 g/m<sup>2</sup> lining: 65g/m<sup>2</sup>**  
**wadding: 130g/m<sup>2</sup>**



**SIZES**

Width / Height

**S**

52/66 cm

**M**

55/69cm

**L**

58/72 cm

**XL**

60/75 cm

**XXL**

62/78 cm

- Exterior: taffeta 100% polyester 300T, 95% polyester, 5% elastane
- Wadding: 100% polyester
- Modern cut
- Aesthetic cut in the chest area
- Hood with stoppers
- 2 front pockets and 2 interior pockets



black



navy blue

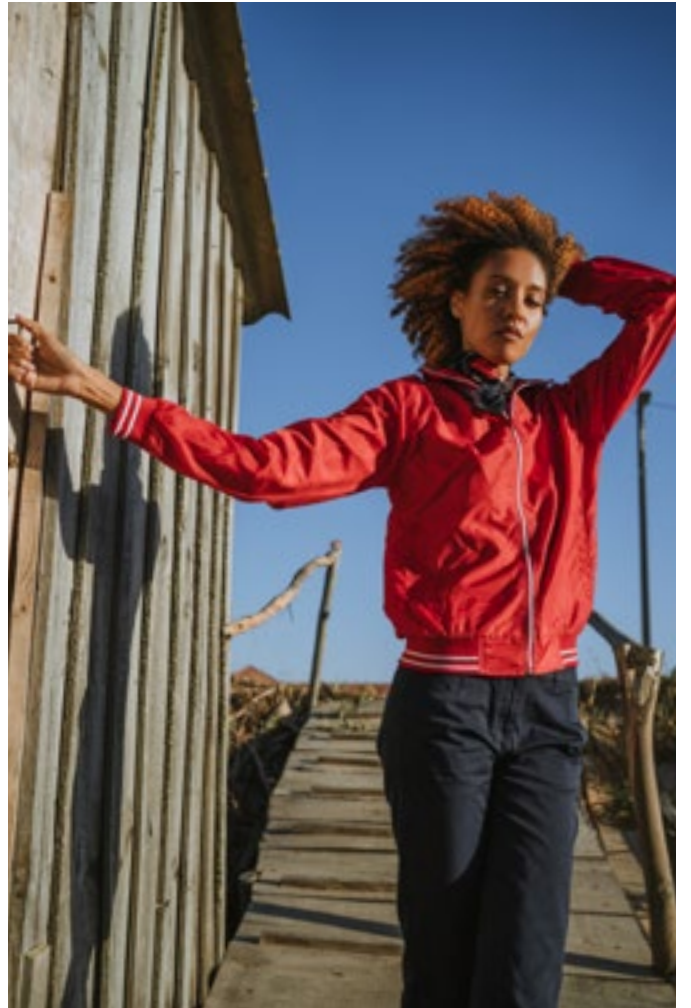


royal blue



red







# O PORTO



**Unisex bicolor jacket 65 g/m<sup>2</sup>**

- 100% polyester
- Modern cut
- Light and comfortable
- Bicolor details on the cuffs, front zipper and bottom of the article
- 2 front pockets
- 1 back zipper in the interior for easy customization



**SIZES**

Width / Height

**S**

54/68 cm

**M**

57/70 cm

**L**

60/72 cm

**XL**

63/74 cm

**XXL**

66/76 cm



black | white



old green | old white



red | white

## C L A S S I C

Through the classic range, we sought to reconcile tradition with the art of doing well, in order to offer products with a timeless elegance, always with the guarantee of comfort and lasting quality. Its versatility allows for a more *corporate* or relaxed use, depending on the respective ambience.







## BATALHA


**Men's long sleeve poplin shirt**  
**115 g/m<sup>2</sup>**

- 65% cotton, 35% polyester
- Adjustable cuffs with 2 buttons
- 2 invisible buttons for collar firmness
- 7 buttons placket
- Long sleeve with 1 pleat
- Fitted cut
- Buttons the same color as the article when in navy blue color or black color
- Pearl buttons in white color and sky blue color

**SIZES**

Width / Height

**S**

54/77 cm

**M**

58/78 cm

**L**

61/79 cm

**XL**

64/80 cm

**XXL**

67/81 cm



white



black



navy blue



sky blue

## BATALHA WOMEN


**Women's long sleeve poplin shirt**  
**115 g/m<sup>2</sup>**

- 65% cotton, 35% polyester
- Cuffs with 1 button
- 2 darts on the back
- 2 invisible buttons for collar firmness
- 7 button placket
- Long sleeve with 1 pleat
- Fitted cut

**SIZES**

Width / Height

**S**

46/67 cm

**M**

49/69 cm

**L**

53/71 cm

**XL**

56/72 cm

**XXL**

59/73 cm



white



black



sky blue





# PARIS



**Men's long sleeve poplin shirt**  
115 g/m<sup>2</sup>

- 68% cotton, 28% polyamide, 4% elastane
- Adjustable cuffs with 2 buttons
- 2 invisible buttons to firm the collar
- Placket with 8 tone on tone buttons
- Long sleeve with 1 pleat
- Fitted cut



**SIZES**

Width / Height

**S**

49/80 cm

**M**

52/81 cm

**L**

56/82 cm

**XL**

59/83 cm

**XXL**

62/84 cm



white



black



sky blue



burgundy



grey

# PARIS WOMEN



**Women's long sleeve poplin shirt**  
115 g/m<sup>2</sup>

- 68% cotton, 28% polyamide, 4% elastane
- Adjustable cuffs with 2 buttons
- 2 invisible buttons to firm the collar
- Placket with 7 tone on tone buttons
- 2 darts on the back
- Long sleeve with 1 pleat
- Fitted cut



**SIZES**

Width / Height

**S**

45/67 cm

**M**

48/69 cm

**L**

51/71 cm

**XL**

54/72 cm

**XXL**

57/73 cm



white



black



sky blue



burgundy



grey



## TOKYO


**Men's long sleeve oxford shirt**  
**130 g/m<sup>2</sup>**

- 70% cotton, 30% polyester
- Left side chest pocket
- 2 visible buttons for collar firmness
- 1 button on the cuff
- 7 pearl color buttons placket (except black, grey and burgundy colors)
- Long sleeve with 2 pleats

**SIZES**

Width / Height

**S**

54/77 cm

**M**

58/78 cm

**L**

61/79 cm

**XL**

64/80 cm

**XXL**

67/81 cm



white



black



sky blue



burgundy



grey

## TOKYO WOMEN


**Women's long sleeve oxford shirt**  
**130 g/m<sup>2</sup>**

- 70% cotton, 30% polyester
- Adjustable cuffs with 2 buttons
- Long sleeve 1 pleat
- 7 pearl color buttons placket (except black, grey and burgundy color)
- 2 darts on the back and front
- Fitted cut

**SIZES**

Width / Height

**S**

46/67 cm

**M**

49/69 cm

**L**

53/71 cm

**XL**

56/72 cm

**XXL**

59/73 cm



white



black



sky blue

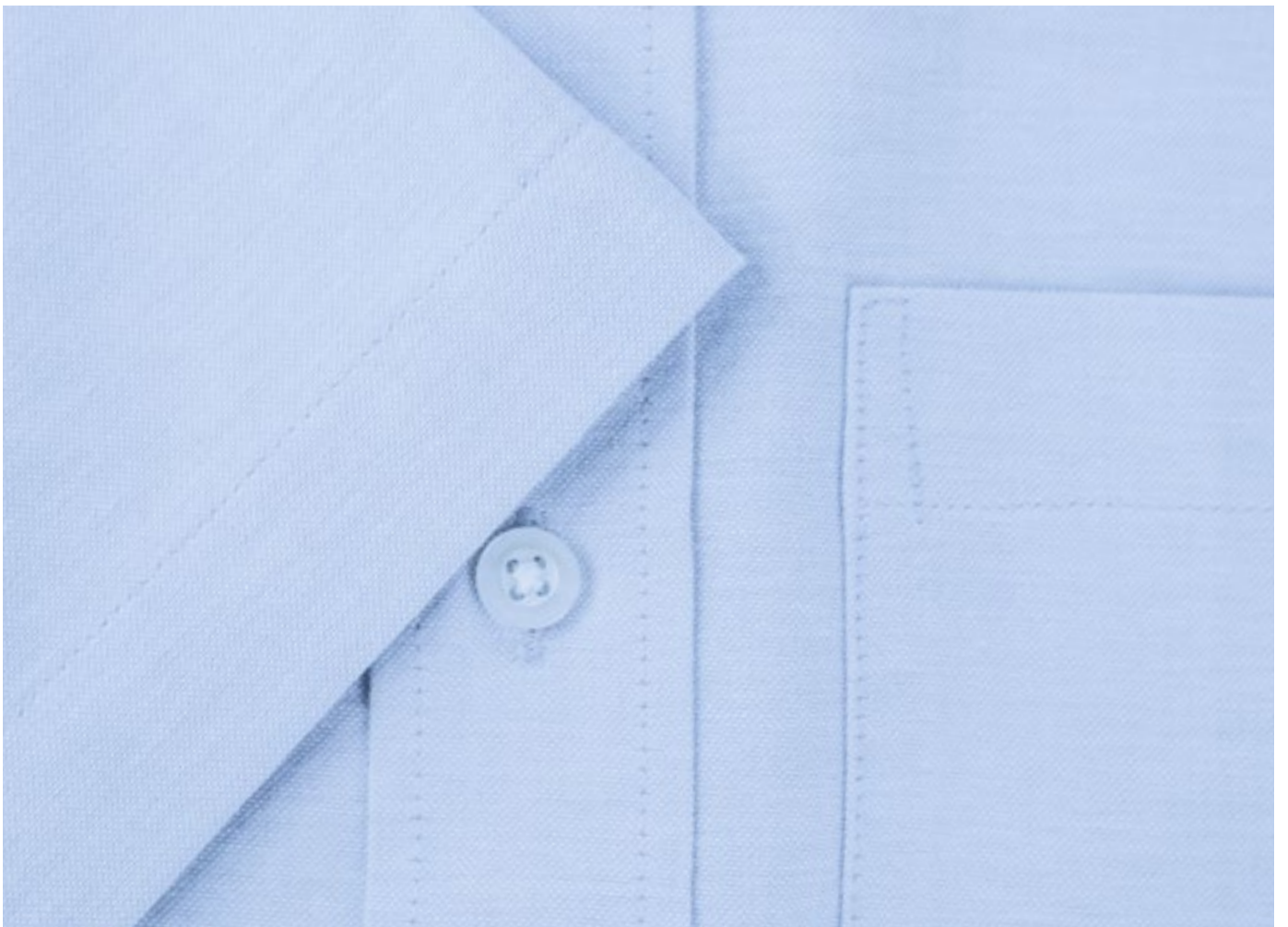
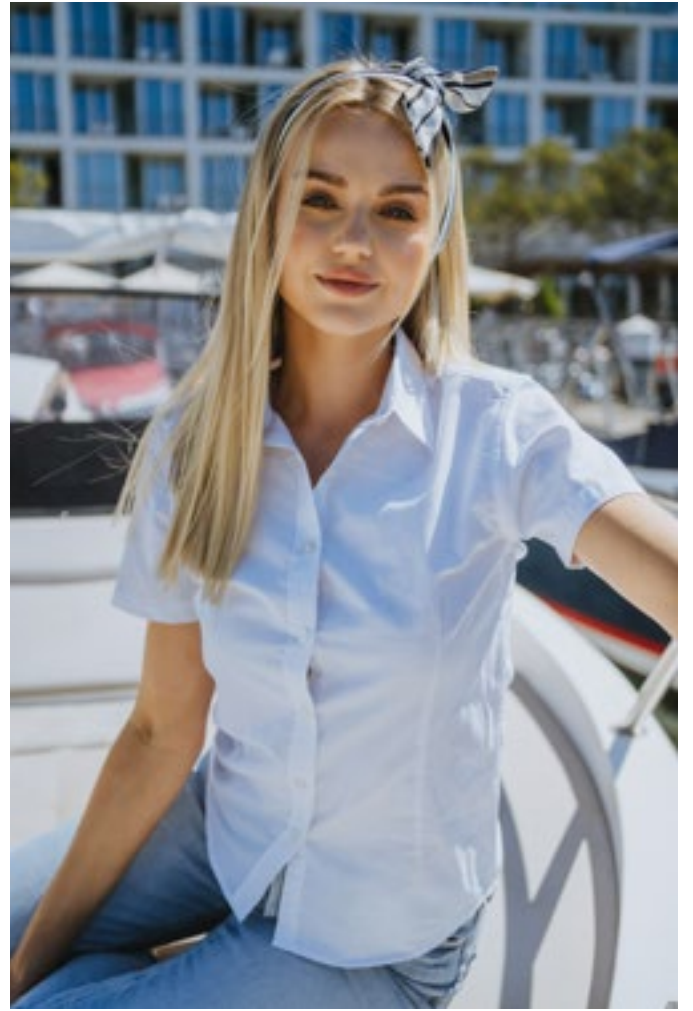


burgundy



grey





## LONDON


**Men's short sleeve oxford shirt**  
**130 g/m<sup>2</sup>**

- 70% cotton, 30% polyester
- Left side chest pocket
- 2 visible buttons for collar firmness
- 7 pearl color buttons placket (except black color)
- Double stitching on the sleeves hem
- Short sleeve

**SIZES**

Width / Height

**S**

49/76 cm

**M**

52/77 cm

**L**

56/78 cm

**XL**

59/79 cm

**XXL**

62/80 cm



white



black



sky blue

## LONDON WOMEN


**Women's short sleeve oxford shirt**  
**130 g/m<sup>2</sup>**

- 70% cotton, 30% polyester
- 7 pearl color buttons placket (except black color)
- 2 darts on the back and front
- Double stitching on the sleeves hem
- Short sleeve
- Fitted cut

**SIZES**

Width / Height

**S**

46/67 cm

**M**

49/69 cm

**L**

53/71 cm

**XL**

56/72 cm

**XXL**

59/73 cm



white



black



sky blue







# MILAN



Men's "V-neck" pullover  
220 g/m<sup>2</sup>

- 70% cotton, 30% polyamide
- Rib cuffs, collar and bottom
- Fully-fashion inserted sleeves



**SIZES**

Width / Height

**S**

50/66 cm

**M**

53/68 cm

**L**

55/70 cm

**XL**

59/72 cm

**XXL**

62/74 cm



black



navy blue



grey melange

# MILAN WOMEN



Women's "V-neck" pullover  
220 g/m<sup>2</sup>

- 70% cotton, 30% polyamide
- Rib cuffs, collar and bottom
- Fully-fashion inserted sleeves



**SIZES**

Width / Height

**S**

42/60 cm

**M**

45/62 cm

**L**

48/64 cm

**XL**

51/66 cm

**XXL**

54/68 cm



black



navy blue



grey melange

## K I D S

TH Clothes considers children's articles to be very important pieces within its range. The responsibility of having products for the youngest is unquestionably a commitment for the brand.

The OEKO-TEX certification given to our products is the guarantee that all components of these articles, have been tested for the presence of harmful substances.







Running, jumping or playing ball will be even more funny with the t-shirts from the TH Clothes' collection. Practical, comfortable and functional, our articles offer the perfect versatility to be combined in various looks and resist the most diverse adventures.



# QUITO



**Kids' unisex t-shirt 150 g/m<sup>2</sup>**

- Jersey 100% cotton
- Carded cotton yarn
- 1x1 rib collar with reinforcement jersey tape
- Double stitching on sleeves and bottom hem
- Cut and sewn



**SIZES**

Width / Height

**2**

31/42 cm

**4**

34/45 cm

**6**

37/48 cm

**8**

40/51 cm

**10**

43/55 cm

**12**

46/59 cm



white



yellow



orchid pink



pastel blue



atoll blue



apple green



**new**  
apricot



grey melange<sup>1</sup>



mustard



fuchsia



eclipse blue



aqua



kelly green



**new**  
grey



black



orange



red



navy blue



royal blue



mint



**new**  
lavender





# ANKARA KIDS



**Kids' unisex t-shirt 190 g/m<sup>2</sup>**

- Jersey 100% cotton
- Carded cotton yarn
- 1x1 rib collar with reinforcement jersey tape
- Double stitching on sleeves and bottom hem
- Cut and sewn



**SIZES**

Width / Height

**2**

31/42 cm

**4**

34/45 cm

**6**

37/48 cm

**8**

40/51 cm

**10**

43/55 cm

**12**

46/59 cm



white

black



yellow

orange



red

fuchsia



royal blue

navy blue



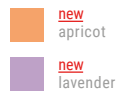
atoll blue

apple green



**new** grey

**new** kelly green



**new** apricot

**new** lavender



# MOVE KIDS

new



**Kids' technical t-shirt 150 g/m<sup>2</sup>**

- Piqué mesh, 100% polyester
- Technical t-shirt with raglan sleeves
- Breathable fabric
- Piqué patch seam on the collar
- Regular cut
- Double stitching on sleeves and bottom hem
- Cut and sewn



**SIZES**

Width / Height

**4**

34/45 cm

**6**

37/48 cm

**8**

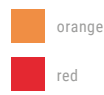
40/51 cm

**10**

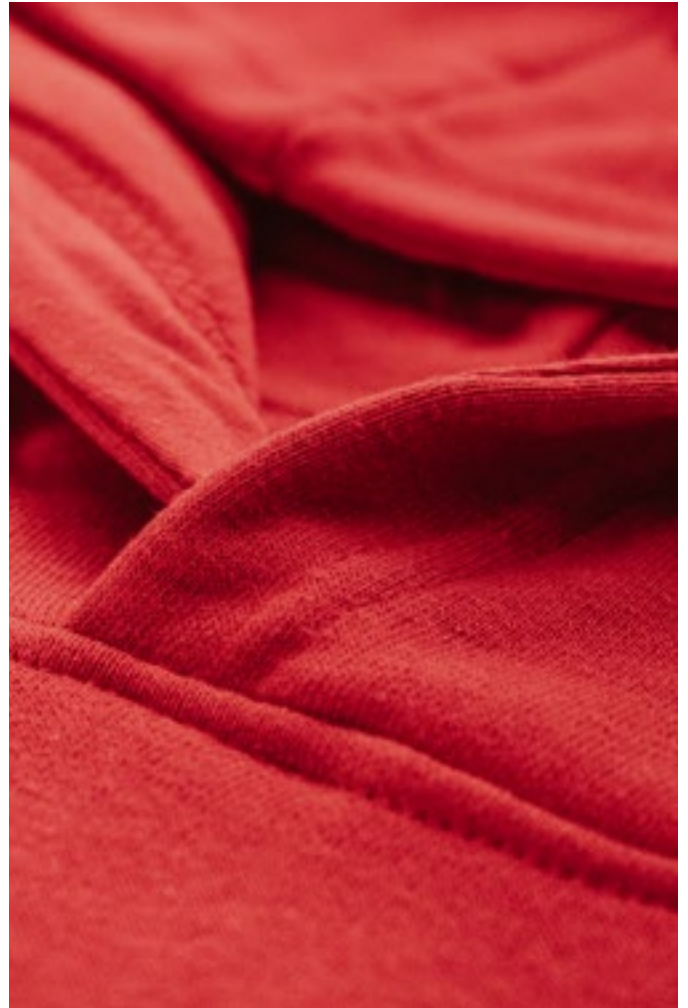
43/55 cm

**12**

46/59 cm







A wardrobe essential, it combines classic style with the soft comfort of cotton. This is a cozy piece that helps keep you warm on the coldest days and allows all kinds of movements, always safe, due to the lack of drawstrings on the hood.



# PHOENIX KIDS



Kids' unisex hooded sweatshirt  
320 g/m<sup>2</sup>

- 50% cotton, 50% polyester
- Carded interior
- Rib 1x1 on cuffs and bottom of the article
- Kangaroo pocket
- Jersey lined hood
- Hood in accordance to the European Union safety norms



**SIZES**

Width / Height

**2**

37,5/41 cm

**4**

39,5/44 cm

**6**

41,5/47 cm

**8**

43,5/51 cm

**10**

46,5/55 cm

**12**

48,5/58,5 cm



white



black



aqua



fuchsia



navy blue



royal blue



red



grey melange







# DELTA KIDS

new



**Kids' unisex sweatshirt 300 g/m<sup>2</sup>**  
 • 50% cotton, 50% polyester  
 • Carded interior  
 • Rib 1x1 and double stitching on collar, cuffs and bottom of the article  
 • Reinforcement tape on collar



**SIZES**

Width / Height

**4**

36/47 cm

**6**

38/50 cm

**8**

40/53 cm

**10**

43/57 cm

**12**

46/61cm



white



black



orange



royal blue



kelly green



red



grey melange



navy blue



# ADAM KIDS



**Kids' polo shirt 195 g/m<sup>2</sup>**

- Piqué 100% cotton
- 1x1 rib collar and cuffs
- Reinforcement tape inside the collar
- Reinforced placket with 3 tone on tone buttons
- Bottom side slits
- Spare button on inside stitching
- Cut and sewn



**SIZES**

Width / Height

**2**

31/43/45 cm

**4**

34/46/48 cm

**6**

37/49/51 cm

**8**

40/52/54 cm

**10**

43/57/59 cm

**12**

46/61/63 cm



white

black



red

burgundy



royal blue



aqua



navy blue



yellow



kelly green





Our design team created this windbreaker, with young and bold lines, essential for the windiest days. This is a model with insulating characteristics, and with adjustable details that give it greater comfort.



# DUBLIN KIDS



Kids' unisex windbreaker hood  
65 g/m<sup>2</sup>

- Taffeta 100% polyester with PU coating
- Hood with tightening stoppers and mesh lining
- Side pockets with zip
- Elastic drawstring with stopper at the bottom



**SIZES**

Width / Height

**6**

38/50 cm

**8**

42/54 cm

**10**

45/58 cm

**12**

48/62 cm

**14**

51/66 cm



black



royal blue



navy blue



red



apple green







# DIAS



**Kids' five panel cap**  
260 g/m<sup>2</sup>

- 100% heavy brushed cotton
- 4 embroidery eyelets
- Laminated front panel
- Adjustable velcro strap
- Pre-formed peak with four decorative seams
- Polyester sweatband
- Five panels



**SIZES**

**ONE SIZE**  
54 cm



white



orange



royal blue



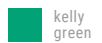
light blue



red



navy blue



kelly green



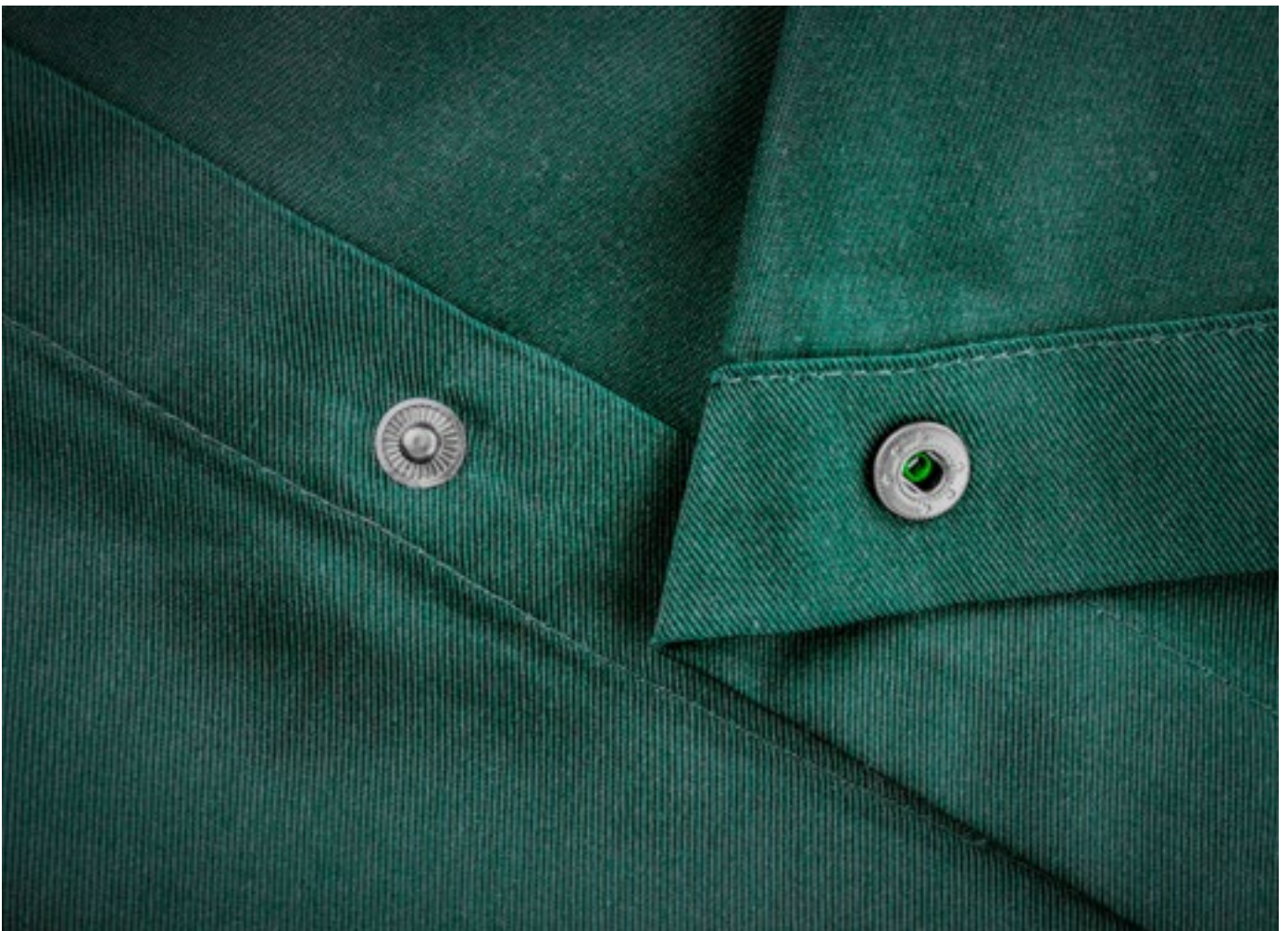
black

## W O R K W E A R

The work articles created by TH Clothes represent the basic needs of this market segment. This is a range of products that offer us the best in terms of resistance combined with a great comfort and durability.







# VADUZ



**2 in 1 apron 190 g/m<sup>2</sup>**

- 80% polyester, 20% cotton
- 2 pockets and an extra one for a pen
- Adjustable buckle
- Press studs to convert the full apron into a serving apron



**SIZES**

Width / Height

**ONE SIZE**

74/72 cm



black



grey



burgundy



brown



forest green



navy blue







# ASTANA



Workwear jacket with removable sleeves  
**exterior: 170 g/m<sup>2</sup>**  
**interior: 65 g/m<sup>2</sup>**  
**wadding: 75 g/m<sup>2</sup>**



**SIZES**

Width / Height

	<b>S</b>	<b>M</b>	<b>L</b>	<b>XL</b>	<b>XXL</b>	<b>3XL</b>
Width / Height	55,5/68 cm	58,5/70cm	61,5/72 cm	64,5/74 cm	67,5/76 cm	70,5/78

- Exterior: 100% oxford polyester with acrylic coating
- Interior: taffeta 100% polyester
- Wadding: 100% polyester
- Removable sleeves through zipper
- Fleece lined collar
- Zipper on the lower back for easy customization
- 2 in 1 padded jacket convertible into vest
- **YKK®** zipper opening



black



grey



navy blue



# CARGO



new



**Workwear trousers 200 g/m<sup>2</sup>**

- Ripstop 65% polyester, 35% cotton
- 8 pockets
- 2 side pockets with small patch pocket on the right side
- 2 back pockets with snap buttons and flaps with fabric detail
- 2 pockets on the side of the leg with snap buttons and flaps with fabric detail and a zipped pocket with fabric puller
- Wide belt loops
- Central zipper with metal slider and metal button
- Waistband with elasticated system



**SIZES**

Width / Height

**S**

43/104 cm

**M**

45/106 cm

**L**

47/108 cm

**XL**

49/110 cm

**XXL**

51/112 cm



black



grey



navy blue





# WARSAW



**Workwear trousers 260 g/m<sup>2</sup>**

- 80% polyester, 20% cotton
- 8 pockets
- Reflective details on the front part
- 3 pockets with velcro
- Front pocket suitable for cellphone
- Oxford panels for kneepads
- Elasticated waistband
- Plastic clip on the waist



**SIZES**

Width / Height

**XS**

36/106 cm

**S**

38/108 cm

**M**

40/110 cm

**L**

42/112 cm

**XL**

44/114 cm

**XXL**

46/116 cm



black



metallic grey



navy blue







## BRATISLAVA

Workwear jacket 240 g/m<sup>2</sup>

- 98% cotton, 2% elastane
- Elasticated cuffs and waist
- Stylized collar
- Closure with press studs
- 2 darts on the back
- Side pockets
- Chest pocket



## SIZES

Width / Height

S

53/64 cm

M

55/66 cm

L

57/68 cm

XL

59/70 cm

XXL

61/72 cm

3XL

63/74 cm



black



grey

navy  
blue

sand

## TALLINN

Workwear trousers with side pockets 240 g/m<sup>2</sup>

- 98% cotton, 2% elastane
- 2 side pockets with discreet zippers
- Elasticated waist
- 2 front and 2 back pockets



## SIZES

Width / Height

S

32,5/101 cm

M

34,5/103 cm

L

36,5/105 cm

XL

38,5/107 cm

XXL

40,5/109 cm

3XL

42,5/111 cm



black



grey

navy  
blue

sand



# MINSK



**Multipurpose coat 190 g/m<sup>2</sup>**

- 80% polyester, 20% cotton
- Elasticated cuffs
- Pleat on the back (opening) to allow freedom of movements
- Elegant and modern cut with side pockets
- Closure with press studs
- Stylized collar cotton



**SIZES**

Width / Height

**S**

58/93 cm

**M**

60/95 cm

**L**

62/97 cm

**XL**

64/99 cm

**XXL**

66/101 cm

**3XL**

68/103 cm



white



black



grey



navy blue



sand





# PIXEL

new



**Multipocket vest 200 g/m<sup>2</sup>**

- 65% polyester, 35% cotton
- Half lining in nylon mesh
- 9 pockets
- 3 chest pockets with flap and velcro + 1 buckle
- 2 bottom pockets with zipper and 4 smaller pockets with flap and velcro
- Water repellent
- Half-moon reinforcement at the back of the collar
- Front opening with zipper in contrasting color



**SIZES**

Width / Height

**S**

54/66/70 cm

**M**

56/68/72 cm

**L**

58/70/74 cm

**XL**

60/72/76 cm

**XXL**

62/74/78 cm

**3XL**

64/76/80 cm



black



dark grey



navy blue



army







# STOCKHOLM



Workwear padded bodywarmer  
**Exterior: 170g/m<sup>2</sup> Interior: 65g/m<sup>2</sup>**  
**Wadding: 140g/m<sup>2</sup>**



**SIZES**

Width / Height

**S**

56/69/75 cm

**M**

58/71/77 cm

**L**

60/73/79 cm

**XL**

62/75/81 cm

**XXL**

64/77/83 cm

**3XL**

66/79/85 cm

- Exterior: oxford 100% polyester with acrylic coating
- Interior: 100% taffeta polyester
- Wadding: 100% polyester
- Polar fleece collar
- 6 pockets: 5 on the front, including 2 with inserted zippers and 1 cell phone pocket
- 1 interior pocket
- Elastic band on the sides for a better fit
- Interior customization zip at lower back
- **YKK®** zipper opening



black



metallic grey



navy blue



royal blue



# ALEXANDRIA



new



**Safety vest 120 g/m<sup>2</sup>**

- 100% polyester, mesh
- Reflective vest
- PPE of category II according to standard EN ISO 20471:2013/A1:2016 and EN ISO 13688:2013/A1:2021
- Two horizontal reflective strips
- Reinforced trims by a tone on tone bias hem
- Self-gripping fastening



**SIZES**

Width / Height

**M-L**

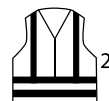
66/68 cm

**XL-XXL**

68/70 cm



Cat. II  
EN ISO 20471:2013/A1:2016



max. 25 x





# ZAGREB WORK



**High visibility softshell 300 g/m<sup>2</sup>**

- 100% polyester – three layers
- High visibility (visible area for class III)
- Water resistant
- Fleece lined
- TPU coating
- 2 front zip pockets and one diagonal chest pocket
- Adjustable cuffs with a velcro strap
- Removable hood with drawstring, adjustable stoppers and velcro strip which fits inside the collar rounded lower back



**SIZES**

Width / Height

	S	M	L	XL	XXL
Width / Height	54/68/72 cm	57/70/74 cm	60/72/76 cm	63/74/78 cm	66/76/80 cm



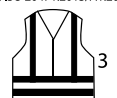
yellow fluo



orange fluo



Cat. II  
EN ISO 20471:2013/A1:2016



## A C C E S S O R I E S

Accessories are the detail that makes all the difference, and the essential part of a good look. TH Clothes has selected a set of articles created on purpose for a perfect harmony with all our products.







# RODRIGO



**Unisex footwear**

- Main fabric - microfiber
- Rubber outsole
- Customizable white sneakers with different colors patches (customization is achieved by changing patches through the velcro system)
- Each pair of sneaker comes with 1 pair of patches in a color of your choice
- Sneakers with laces
- Decorative stitching around the heel area
- 3 perforations in the inner area of the shoe for better breathability
- Possible patch decoration techniques: pad printing/ tampography, hot stamping debossing with low relief, high frequency and printing, screen printing, embroidery, flex and direct/digital UV printing.



SIZES	35	36	37	38	39	40	41
Width (EU/CM)	23,5 cm	23,9 cm	24,6 cm	25,3 cm	26,cm	26,7 cm	27,3 cm
	42	43	44	45	46	47	
	28 cm	28,6 cm	29,3 cm	30 cm	30,6 cm	31,3 cm	



**ONE SIZE**

- |        |        |      |           |            |      |              |
|--------|--------|------|-----------|------------|------|--------------|
| white  | black  | grey | navy blue | royal blue | aqua | fuchsia      |
| yellow | orange | red  | burgundy  | brown      | army | forest green |

**Customizable patch**

- Main fabric - microfiber
- Patches with velcro system
- One item correspond to a patch pair





# CABRAL



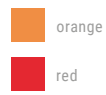
**Adult five panel cap**  
260 g/m<sup>2</sup>

- 100% heavy brushed cotton
- 4 embroidery eyelets
- Laminated front panel
- Adjustable metal strap
- Pre-formed peak with six decorative seams
- Polyester sweatband
- Five panels



**SIZES**

**ONE SIZE**  
58 cm



## T E C H N I C A L   I N F O R M A T I O N

Here you can find all the technical information you need, from the GSM (grams per square meter) to the packaging characteristics.





## TECHNICAL INFORMATION



**LUANDA**  
Men's t-shirt  
150 g/m<sup>2</sup>

**SHIPPING INFORMATION**



**BOX** - 56x37x30 cm / 16 kg



**ANKARA WOMEN**  
Women's t-shirt  
190 g/m<sup>2</sup>

**SHIPPING INFORMATION**



**BOX** - 46x34x32 cm / 14 kg



**SOFIA**  
Women's t-shirt  
150 g/m<sup>2</sup>

**SHIPPING INFORMATION**



**BOX** - 47x35x30 cm / 12 kg



**ATHENS**  
Men's "V-neck" t-shirt  
150 g/m<sup>2</sup>

**SHIPPING INFORMATION**



**BOX** - 51x37x31 cm / 17 kg



**FAIR new**  
Unisex t-shirt  
150 g/m<sup>2</sup>

**SHIPPING INFORMATION**



**BOX** - 56x37x30 / 16 kg



**ATHENS WOMEN**  
Women's "V-neck" t-shirt  
150 g/m<sup>2</sup>

**SHIPPING INFORMATION**



**BOX** - 46x34x31 cm / 12 kg



**ANKARA**  
Men's t-shirt  
190 g/m<sup>2</sup>

**SHIPPING INFORMATION**



**BOX** - 57x38x32 cm / 21 kg



**BUCHAREST**  
Men's long sleeve t-shirt  
150 g/m<sup>2</sup>

**SHIPPING INFORMATION**



**BOX** - 54x39x27 cm / 12 kg



**BUCHAREST WOMEN**  
Women's long sleeve t-shirt  
**150 g/m<sup>2</sup>**

**SHIPPING INFORMATION**



**BOX** - 44x33x24 cm / 8 kg



**ADAM**  
Men's polo t-shirt  
**195 g/m<sup>2</sup>**

**SHIPPING INFORMATION**



**BOX** - 54x40x25 cm / 14 kg



**IBIZA**  
Men's tank top  
**140 g/m<sup>2</sup>**

**SHIPPING INFORMATION**



**BOX** - 54x37x15 cm / 7 kg



**EVE**  
Women's polo shirt  
**195 g/m<sup>2</sup>**

**SHIPPING INFORMATION**



**BOX** - 45x34x25 cm / 10 kg



**TIRANA**  
Women's racerback tank top  
**160 g/m<sup>2</sup>**

**SHIPPING INFORMATION**



**BOX** - 48x35x25 cm / 14 kg



**BERLIN**  
Men's polo shirt  
**200 g/m<sup>2</sup>**

**SHIPPING INFORMATION**



**BOX** - 53x39x30 cm / 14 kg



**SAN MARINO**  
Men's t-shirt  
**195 g/m<sup>2</sup>**

**SHIPPING INFORMATION**



**BOX** - 55x37x23 cm / 14 kg



**BERLIN WOMEN**  
Women's polo shirt  
**200 g/m<sup>2</sup>**

**SHIPPING INFORMATION**



**BOX** - 46x34x26 cm / 10 kg



## TECHNICAL INFORMATION



**MONACO**  
Men's polo shirt  
240 g/m<sup>2</sup>

**SHIPPING INFORMATION**



**BOX** - 53x39x26 cm / 16 kg



**BERN**  
Men's long sleeve polo shirt  
210 g/m<sup>2</sup>

**SHIPPING INFORMATION**



**BOX** - 55x40x32 cm / 18 kg



**MONACO WOMEN**  
Women's polo shirt  
240 g/m<sup>2</sup>

**SHIPPING INFORMATION**



**BOX** - 46x34x26 cm / 10 kg



**BERN WOMEN**  
Women's long sleeve polo shirt  
210 g/m<sup>2</sup>

**SHIPPING INFORMATION**



**BOX** - 47x36x32 cm / 14 kg



**ROME**  
Men's bicolour polo shirt  
210 g/m<sup>2</sup>

**SHIPPING INFORMATION**



**BOX** - 55x38x26 / 14 kg



**DHAKA**  
Polo shirt with pocket for men  
195 g/m<sup>2</sup>

**SHIPPING INFORMATION**



**BOX** - 53x39x26 cm / 14 kg



**ROME WOMEN**  
Women's bicolour polo shirt  
210 g/m<sup>2</sup>

**SHIPPING INFORMATION**



**BOX** - 47x36x26 cm / 12 kg



**DELTA**  
Unisex sweatshirt  
300 g/m<sup>2</sup>

**SHIPPING INFORMATION**



**BOX** - 58x36x48 cm / 14 kg



**PHOENIX**  
Unisex hooded sweatshirt  
320 g/m<sup>2</sup>

**SHIPPING INFORMATION**



**BOX** - 59x39x37 cm / 12 kg



**AMSTERDAM**  
Men's hooded full zipped  
sweatshirt  
320 g/m<sup>2</sup>

**SHIPPING INFORMATION**



**BOX** - 59x37x43 cm / 15 kg



**COLOMBO**  
Unisex sweatshirt in french  
terry  
240 g/m<sup>2</sup>

**SHIPPING INFORMATION**



**BOX** - 56x35x33 cm / 12 kg



**AMSTERDAM WOMEN**  
Women's hooded full zipped  
sweatshirt  
320 g/m<sup>2</sup>

**SHIPPING INFORMATION**



**BOX** - 59x37x43 cm / 13 kg



**MOSCOW**  
Unisex bicolor sweatshirt  
320 g/m<sup>2</sup>

**SHIPPING INFORMATION**



**BOX** - 59x36x37 cm / 13 kg



**KARACHI** *new*  
Unisex hooded sweatshirt  
280 g/m<sup>2</sup>

**SHIPPING INFORMATION**



**BOX** - 58,5x36x35 cm / 11 kg



**BUDAPEST**  
Unisex sweatshirt with ¼ zip  
320 g/m<sup>2</sup>

**SHIPPING INFORMATION**



**BOX** - 57x40x34 cm / 13 kg



**MOVE** *new*  
Technical t-shirt  
150 g/m<sup>2</sup>

**SHIPPING INFORMATION**



**BOX** - 54x37x36cm / 19 kg

## TECHNICAL INFORMATION



**TUBE** *new*  
T-shirt for water sports  
**190 g/m<sup>2</sup>**

**SHIPPING INFORMATION**



**BOX** - 43x43x36 cm / 12 kg



**HELSINKI**  
Men's polar fleece jacket  
**260 g/m<sup>2</sup>**

**SHIPPING INFORMATION**



**BOX** - 59x40x42 cm / 15 kg



**GAMA**  
Men's high density polar fleece jacket  
**300 g/m<sup>2</sup>**

**SHIPPING INFORMATION**



**BOX** - 59x40x42 cm / 12 kg



**HELSINKI WOMEN**  
Women's polar fleece jacket  
**260 g/m<sup>2</sup>**

**SHIPPING INFORMATION**



**BOX** - 50x37x42 cm / 14 kg



**GAMA WOMEN**  
Women's high density polar fleece jacket  
**300 g/m<sup>2</sup>**

**SHIPPING INFORMATION**



**BOX** - 56x39x37 cm / 10 kg



**EANES**  
Unisex softshell jacket with zipper  
**280 g/m<sup>2</sup>**

**SHIPPING INFORMATION**



**BOX** - 59x39x37 cm / 13 kg



**VIENNA**  
Unisex polar fleece with ¼ zip  
**260 g/m<sup>2</sup>**

**SHIPPING INFORMATION**



**BOX** - 58x40x41 cm / 9 kg



**ZAGREB**  
Men's softshell with removable hood  
**280 g/m<sup>2</sup>**

**SHIPPING INFORMATION**



**BOX** - 59x40x40 cm / 18 kg



**ZAGREB WOMEN**

Women's softshell with  
removable hood  
**280 g/m<sup>2</sup>**

**SHIPPING INFORMATION**

1



20

**BOX - 55x40x44 cm / 17 kg****DUBLIN**

Unisex windbreaker with mesh  
lined hood  
**65 g/m<sup>2</sup>**

**SHIPPING INFORMATION**

5



50

**BOX - 61x40x24 cm / 10 kg****BAKU**

Softshell vest  
**280 g/m<sup>2</sup>**

**SHIPPING INFORMATION**

1



20

**BOX - 60x40x21 cm / 14 kg****SKOPJE**

Men's full zip hooded jacket  
**Exterior: 280g/m<sup>2</sup>**  
**Interior: 65 g/m<sup>2</sup>**  
**Wadding: 130 g/m<sup>2</sup>**

**SHIPPING INFORMATION**

1



20

**BOX - 60x39x42 cm / 14 kg****LIUBLIANA**

Padded unisex parka  
**Exterior: 240 g/m<sup>2</sup>**  
**Interior: 65 g/m<sup>2</sup>**  
**Wadding: 80 g/m<sup>2</sup>**

**SHIPPING INFORMATION**

1



10

**BOX - 64x41x39 cm / 11 kg****OPORTO**

Unisex bicolor jacket  
**65 g/m<sup>2</sup>**

**SHIPPING INFORMATION**

1



20

**BOX - 45x34x28 cm / 8 kg****BRUSSELS**

Unisex padded down parka  
**Exterior: 75 g/m<sup>2</sup>**  
**Interior: 50 g/m<sup>2</sup>**  
**Wadding: 335 g/m<sup>2</sup>**

**SHIPPING INFORMATION**

1



10

**BOX - 54x45x50 cm / 16 kg****BATALHA**

Men's long sleeve poplin shirt  
**115 g/m<sup>2</sup>**

**SHIPPING INFORMATION**

1



20

**BOX - 50x36x34 / 5 kg**

## TECHNICAL INFORMATION



**BATALHA WOMEN**  
 Women's long sleeve poplin shirt  
**115 g/m<sup>2</sup>**

**SHIPPING INFORMATION**



**BOX** - 50x36x34 cm / 5 kg



**TOKYO WOMEN**  
 Women's long sleeve oxford shirt  
**130 g/m<sup>2</sup>**

**SHIPPING INFORMATION**



**BOX** - 50x36x34 cm / 6 kg



**PARIS**  
 Men's long sleeve poplin shirt  
**115 g/m<sup>2</sup>**

**SHIPPING INFORMATION**



**BOX** - 50x36x34 cm / 7 kg



**LONDON**  
 Men's short sleeve oxford shirt  
**130 g/m<sup>2</sup>**

**SHIPPING INFORMATION**



**BOX** - 50x36x34 cm / 6 kg



**PARIS WOMEN**  
 Women's long sleeve poplin shirt  
**115 g/m<sup>2</sup>**

**SHIPPING INFORMATION**



**BOX** - 50x36x34 cm / 6 kg



**LONDON WOMEN**  
 Women's short sleeve oxford shirt  
**130 g/m<sup>2</sup>**

**SHIPPING INFORMATION**



**BOX** - 50x36x34 cm / 5 kg



**TOKYO**  
 Men's long sleeve oxford shirt  
**130 g/m<sup>2</sup>**

**SHIPPING INFORMATION**



**BOX** - 50x36x34 cm / 8 kg



**MILAN**  
 Men's "V-neck" pullover  
**220 g/m<sup>2</sup>**

**SHIPPING INFORMATION**



**BOX** - 54x36x25 cm / 9 kg



**MILAN WOMEN**  
Women's "V-neck" pullover  
**220 g/m<sup>2</sup>**

**SHIPPING INFORMATION**



**BOX** - 54x36x25 cm / 7 kg



**PHOENIX KIDS**  
Kids' unisex hooded  
sweatshirt  
**320 g/m<sup>2</sup>**

**SHIPPING INFORMATION**



**BOX** - 53x37x23 cm / 7 kg



**QUITO**  
Kids' unisex t-shirt  
**150 g/m<sup>2</sup>**

**SHIPPING INFORMATION**



**BOX** - 39x26x30 cm / 9 kg



**DELTA KIDS** *new*  
Kids' unisex sweatshirt  
**300 g/m<sup>2</sup>**

**SHIPPING INFORMATION**



**BOX** - 44x27x39 cm / 9 kg



**ANKARA KIDS**  
Kids' unisex t-shirt  
**190 g/m<sup>2</sup>**

**SHIPPING INFORMATION**



**BOX** - 39x27x32 cm / 13 kg



**ADAM KIDS**  
Kids' polo shirt  
**195 g/m<sup>2</sup>**

**SHIPPING INFORMATION**



**BOX** - 39x26x30 cm / 8 kg



**MOVE KIDS** *new*  
Kids' technical t-shirt  
**150 g/m<sup>2</sup>**

**SHIPPING INFORMATION**



**BOX** - 40,6x27x36cm / 12 kg



**DUBLIN KIDS**  
Kids' unisex windbreaker  
**65 g/m<sup>2</sup>**

**SHIPPING INFORMATION**



**BOX** - 47x35x24 / 8 kg

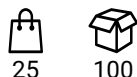


## TECHNICAL INFORMATION



**DIAS**  
Kids' five panel cap  
**260 g/m<sup>2</sup>**

**SHIPPING INFORMATION**



25 100

**BOX** - 70x45x20 cm / 7 kg



**WARSAW**  
Workwear trousers  
**260 g/m<sup>2</sup>**

**SHIPPING INFORMATION**



1 10

**BOX** - 40x32x18 cm / 7 kg



**VADUZ**  
2 in 1 apron  
**190 g/m<sup>2</sup>**

**SHIPPING INFORMATION**



5 50

**BOX** - 55x31x25 cm / 13,5 kg



**TALLINN**  
Workwear trousers with side pockets  
**240 g/m<sup>2</sup>**

**SHIPPING INFORMATION**



1 10

**BOX** - 40x35x21 cm / 6,5 kg



**ASTANA**  
Workwear jacket with removable sleeves  
**Exterior: 170g/m<sup>2</sup>**  
**Interior: 65 g/m<sup>2</sup>**  
**Wadding: 75 g/m<sup>2</sup>**

**SHIPPING INFORMATION**



1 10

**BOX** - 60x40x35 cm / 7 kg



**BRATISLAVA**  
Workwear jacket  
**240 g/m<sup>2</sup>**

**SHIPPING INFORMATION**



1 20

**BOX** - 60x40x20 cm / 9,5 kg



**CARGO** *new*  
Workwear trousers  
**200 g/m<sup>2</sup>**

**SHIPPING INFORMATION**



1 10

**BOX** - 45x24x46,5 cm / 14,4 kg



**MINSK**  
Multipurpose coat  
**190 g/m<sup>2</sup>**

**SHIPPING INFORMATION**



1 20

**BOX** - 60x40x22 cm / 10 kg



**PIXEL** new  
 Multipocket vest  
**200 g/m<sup>2</sup>**

**SHIPPING INFORMATION**



1

25

**BOX** - 34x40x26 cm / 9 kg



**ALEXANDRIA** new  
 Safety vest  
**120 g/m<sup>2</sup>**

**SHIPPING INFORMATION**



1

100

**BOX** - 45x24x46,5 cm / 14,4 kg



**CABRAL**  
 Adult five panel cap  
**260 g/m<sup>2</sup>**

**SHIPPING INFORMATION**



25

100

**BOX** - 75x45x20 cm / 9 kg



**ZAGREB WORK**  
 High-visibility softshell with  
 removable hood  
**300 g/m<sup>2</sup>**

**SHIPPING INFORMATION**



1

20

**BOX** - 58x38x44 cm / 18 kg



**STOCKHOLM**  
 Workwear padded bodywarmer  
**Exterior: 170g/m<sup>2</sup>**  
**Interior: 65 g/m<sup>2</sup>**  
**Wadding: 75 g/m<sup>2</sup>**

**SHIPPING INFORMATION**



1

10

**BOX** - 59x40x25 cm / 6 kg



**RODRIGO**  
 Unisex footwear

**SHIPPING INFORMATION**



1

12

**BOX** - 65,5x40x32,5 cm / 9,8 kg

# COLOR PALETTE









[thclothes.com](http://thclothes.com)

**Distribution** Portugal Spain Greece Netherlands Italy Croatia Belgium Slovenia Lithuania  
Serbia Hungary Poland Angola Cabo Verde Romania Cameroon Finland